



Smart perimeter protection.

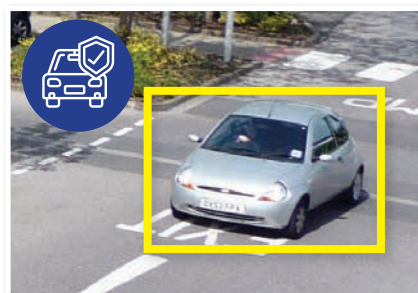
Professional AI Series: Motorised & fixed AI perimeter protection bullets in 4.0MP

Featuring intelligent perimeter protection, the Professional AI Series identifies people & vehicles during motion detection to filter out false alarms, providing reliable real-time alerts and analytics. Achieving high quality video evidence with colour in low light & true WDR, the series excels at outdoors motion detection applications.

- Stream up to 4.0MP (2688 x 1520) at 25fps
- H.265 encoding for efficient storage & streaming
- Up to 60m infrared range; true day/night (auto ICR)
- MicroSD slot for recording at the edge up to 256GB
- Smart Motion Detection (AI NVR not required)
- Perimeter Protection combines Smart Motion Detection with tripwire/intrusion rules
- Back/highlight compensation & true WDR (120dB)
- 3D digital noise reduction & auto white balance
- IP67 weather rated housing for outdoor use



Double Full HD Resolution



Smart Perimeter Protection



Weather Resistant Housing

Specifications		4.0MP Motorised AI Bullet	4.0MP Fixed AI Bullet
Ordering Information		VSIPP-4BIRMG-I: Standard	VSIPP-4BIRG-I: Standard
Camera	Image Sensor	1/3" 4.0MP Progressive Scan CMOS	
	Effective Pixels	2688 (H) x 1520 (V)	
	RAM / ROM	128MB / 128MB	512MB / 128MB
	Min Illumination	0.008 Lux/F1.5 (Color)	0.005 Lux/F1.6 (Color)
	S/N Ratio	> 50dB	
Infrared System		4 x Infrared LED, 60m range, Auto/manual on/off control	1 x Infrared LED, 50m range, Auto/manual on/off control
Lens	Lens / Iris	2.7 ~ 13.5mm F1.5 Motorised Varifocal Lens with Fixed Iris	2.8mm F1.6 Fixed Lens
	Field of View	Horizontal: 104°~27°, Vertical: 55°~15° (5x Optical Zoom)	Horizontal: 103°, Vertical: 55°
	Focus	Auto Focus / 0.8m Min. Focus Distance	Fixed / 0.9m Min. Focus
DORI	Detect (25px/m)	64m (wide) / 220m (tele)	56m
	Observe (63px/m)	26m (wide) / 88m (tele)	22m
	Recognise (125px/m)	13m (wide) / 44m (tele)	11m
	Identify (250px/m)	6m (wide) / 22m (tele)	6m
Resolution		4.0MP (2688 x 1520) to CIF (352 x 288)	
Frame Rate	Main	4.0MP (1 ~ 20fps) / 3.0MP (1 ~ 25fps)	4.0MP (1 ~ 25fps)
	Sub	D1 (1 ~ 25fps)	D1 (1 ~ 25fps)
	Third	N/A	720p (1 ~ 25fps)
Video Compression		H.265 / H.264 / H.264B / MJPEG	
Bit Rate		H.265: 12 ~ 6144Kbps / H.264: 32 ~ 6144Kbps	H.265: 3 ~ 8192Kbps / H.264: 3 ~ 8192Kbps
Bit Rate Control		Constant bit rate (CBR) / Variable bit rate (VBR)	
Day/Night		Auto (ICR) / Color / B&W	
Lighting Compensation		BLC / HLC / WDR (120dB)	
White Balance		Auto / Natural / Street Lamp / Outdoor / Manual / Regional Custom	
Gain Control		Auto / Manual	
Noise Reduction		3D DNR	
Picture Control		Mirror / Flip (0°, 90°, 180°, 270°)	Mirror / Flip (0°, 90°, 180°, 270°) (Support 90°/270° at 2.0MP resolution)
IVS	Intelligent Functions	Motion Detection (4 zones), Region of Interest (4 zones), Privacy Masking (4 zones), Smart Infrared	
	Perimeter Protection	Tripwire, Intrusion (recognition of human or vehicle)	
	Intelligent Search	With a smart NVR intelligent search. Search tripwire/ intrusion events by people or vehicle.	
Network	Ethernet	RJ-45 (10/100Base-T)	
	Protocol	IPv4; IPv6; HTTP; HTTPS; TCP; UDP; ARP; RTP; RTSP; RTCP; RTMP; SMTP; FTP; SFTP; DHCP; DNS; DDNS; QoS; UPnP; NTP; Multicast; ICMP; IGMP; NFS; PPPoE; 802.1x; Bonjour	IPv4; IPv6; HTTP; HTTPS; TCP; UDP; ARP; RTP; RTSP; RTCP; RTMP; SMTP; FTP; SFTP; DHCP; DNS; DDNS; QoS; UPnP; NTP; Multicast; ICMP; IGMP; NFS; PPPoE; 802.1x; SNMP
	Streaming Method	Unicast / Multicast	
	Max. User Access	20 Users	
Video Interface		N/A	
Audio Interface		1 input (RCA Port) / 1 output (RAC Port) / Audio Compression - G.711a; G.711Mu; G726; AAC	Built-in Mic / Audio Compression - G.711a; G.711Mu; G726; AAC
Alarm Interface		1 channel in: 5mA 5VDC / 1 channel out: 300mA 12VDC	
RS485		N/A	
Edge Storage		MicroSD Card (up to 256GB) / NAS	MicroSD Card (up to 256GB) / NAS / FTP / SFTP
Interoperability		ONVIF / P2P / CGI / Milestone / Genetec	
Power Supply		12VDC / PoE (802.3af)	
Power Consumption		<9.6W	<5.4W
Operating Conditions		-30°C ~ +60°C / ≤95% RH	
Ingress Protection		IP67	
Vandal Resistance		N/A	
Housing		Metal	
Pan/Tilt/Rotation		Pan: 0° ~ 360°, Tilt: 0° ~ 90°, Rotation: 0° ~ 360°	
Dimensions		Ø90mm x 244mm	193mm x 71mm x 66mm
Net Weight		0.90kg	0.59kg
Installation	Dimensions & Mounting Options		
		<p>Junction Mount</p> <p>VSBKTA130</p>	<p>Pole Mount</p> <p>VSBKTA130 + VSBKTA152</p>

Your local VIP Vision™ IP solutions professional:

www.activeonline.com.au 1300 816 742