



ELECTRONIC TILT SENSOR ACCELEROMETER

Part No. TILTSENSE2

TILT SENSOR

This sensor detects the lift of the parked vehicle. Once the vehicle is parked and the alarm armed, the sensor memorizes the angle of lean and triggers when a change of 1° or more is detected. It must be connected to an alarm system, which has a negative trigger and a 'ground when armed' output.

CONNECTION:

Connect the module in the following way:

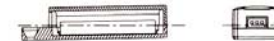
- Red wire (1):** connect to constant positive + 12V
- Black wire (2):** connect the black wire to 'ground when armed'. **DO NOT CONNECT TO PERMANENT GROUND**
- Blue wire (3):** connect the blue wire to a negative trigger (the sensor supplies a negative pulse with duration of 0.5s)
Trigger delay time is 2.0s



Maximum inclination of 10°
right side



Correct installation: horizontal



Maximum inclination 10°
left side

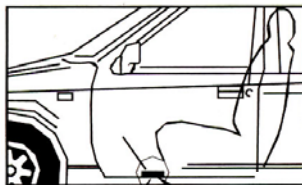


FUNCTION DESCRIPTION:

Once all electrical connections have been made, arm the alarm. The sensor has a setting time of about 10 sec. During which time it will not detect any movements. During these 10 seconds, the sensor memorizes the lean angle of the vehicle. The sensor will then trigger the alarm if it detects a change of more than 1° from the memorized position. After an alarm cycle, the sensor re-sets immediately.

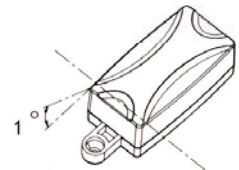
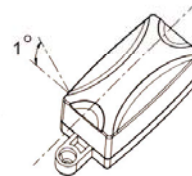
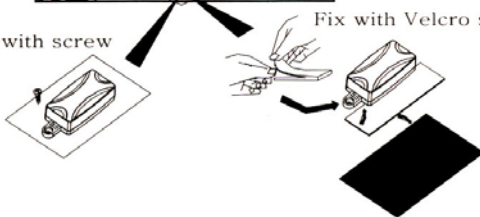
INSTALLATION OF THE ANTI-LIFT SENSOR:

The sensor must be installed centrally inside the vehicle, fixed under the carpet, behind the dashboard or center console in the horizontal position. It will be necessary to fix the sensor to the vehicle using a screw or with the supplied Velcro sticker - do not leave loose. If these mounting instructions are not followed, the sensor may not function correctly.



Fix with screw

Fix with Velcro sticker



TECHNICAL FEATURES:

- Power Supply.....9-15V DC
- Current absorption0.8mA (average value during normal function)
- Temperature range.....-40°C ~ +85°C
- Surveying.....on 2 axes X. Y.
- Maximum Sensitivity.....1+0.5 -0°(factory default).
3+0.5 -0° (condition: remove the upper cover with screwdriver, cut the resistance R7 on the PCB).
- Angle of Surveying.....±90°
- Output duration signalnegative pulse with duration of 0.5sec.
Output protected against short circuits.

Contact Us:

Head Office:
9 Hannabus Place,
McGraths Hill NSW 2756
Tel: 02 4577 4708 Fax: 02 4577 4885
Mon - Fri: 8:30am - 5pm

Haberfield Branch:
223b Ramsay Street,
Haberfield NSW 2045
Tel: 02 9716 0444 Fax: 02 9799 2024
Mon - Fri: 9am - 5pm, Sat: 9am - 1pm

Villawood Branch:
71 Middleton Road,
Villawood NSW 2163
Tel: 02 9743 8222 Fax: 02 9743 8590
Mon - Fri: 9am - 5pm, Sat: 9am - 1pm