



Compact & powerful AI PTZ.

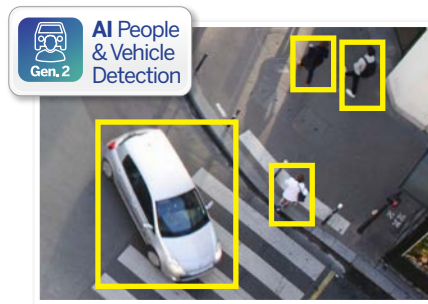
PTZ AI Series: 4x zoom PTZ dome with AI powered video analytics

Small in size but big on features, the PTZ AI Dome combines the flexibility and coverage of PTZ with the power of smart AI technology. The PTZ AI Series identifies people & vehicles using machine learning technology, reducing false motion detection alerts and providing meaningful video event notifications in real-time.

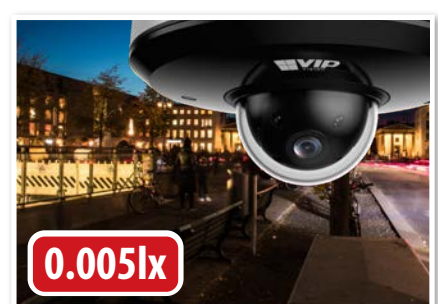
- Stream up to 4.0MP (2560 x 1440) at 25fps
- 4x optical zoom lens (32°~97° H viewing angles)
- Low light colour performance at 0.005lx; 20m IR
- 355° panning with tilt adjust; flip 180°
- Intelligent AI detection to identify people & vehicles
- Next-Gen Smart Motion Detection (SMD 3.0) & Perimeter Protection to prevent false alarms, using VIP Vision NVRs
- MicroSD card slot for recording up to 512GB
- Supports Power over Ethernet (802.3af)
- IP66 weather & IK08 vandal rated resistant housing



Up to 4x Optical Zoom



AI Human & Vehicle Detection



Superb Low Light Performance

Specifications		4.0MP 4x Zoom AI PTZ Dome			
Ordering Information		VSIPTZ-4IRM-12			
Camera	Image Sensor	1/2.8" 4.0MP Progressive Scan CMOS			
	Effective Pixels	2560 (H) x 1440 (V)			
	RAM / ROM	512 MB / 256 MB			
	Min Illumination	0.005 Lux/F1.8 (Color), 0.0005 Lux/ F1.8 (B/W), 0 Lux (IR on)			
	S/N Ratio	≥55 dB			
	Infrared System	3 x Infrared LED, 20m range, Auto/manual on/off control			
Lens	Lens / Iris	2.8 ~ 12mm F1.8 ~ F2.7 Motorised Lens with Auto Iris			
	Field of View	Horizontal: 32°~97°, Vertical: 18°~51°, Diagonal: 36°~116° (4x Optical Zoom)			
	Focus	Auto/Manual / 0.2m Min. Focus Distance			
DORI	Detect (25px/m)	240m			
	Observe (63px/m)	95m			
	Recognise (125px/m)	48m			
	Identify (250px/m)	24m			
PTZ	Pan / Tilt Range	Pan: 0 ~ 355° / Tilt: 5 ~ 90°			
	PTZ Speed	Preset: Pan: 80°/s; Tilt: 40°/s Manual: Pan: 70°/s; Tilt: 30°/s			
	Modes / Presets	Up to 300 presets / 8 tour			
	Start-up Action	Auto-restore to previous PTZ/lens status			
	Auto Tracking	N/A			
Video	Resolution	4.0MP (2560 x 1440) to CIF(352 x 288)			
	Frame Rate	Main	4.0MP (1 ~ 25fps)		
		Sub	D1 (1 ~ 25fps)		
		Third	720p (1 ~ 25fps)		
	Video Compression	H.264H; H.264B; Smart H.265+; H.264; H.265; MJPEG (Sub Stream); Smart H.264+			
	Bit Rate	H.264: 96 ~ 14,848Kbps / H.265: 38 ~ 8,960Kbps			
	Bit Rate Control	Constant bit rate (CBR) / Variable bit rate (VBR)			
	Day/Night	Auto (ICR) / Color / B&W			
	Lighting Compensation	BLC / HLC / WDR (120dB)			
	Smart Scene Adaptive	N/A			
	White Balance	Auto / Indoor / Outdoor / Track / Manual / Sodium Lamp / Natural Light / Street Lamp			
	Gain Control	Auto / Manual			
Noise Reduction	2D / 3D				
Picture Control	Flip 180°				
IVS	Video Functions	Abandoned/Missing Object, Motion Detection, Region of Interest, Electronic Image Stabilisation, Defog			
	AI Functions	Smart Motion Detection (SMD 3.0): People and vehicle detection using motion detection Perimeter Protection: People and vehicle detection using tripwire or intrusion rules Other: Face Detection, People Counting, Fast Moving Detection, Loitering Detection, Parking & Gathering Detection			
	People Counting	Supports Line Crossing/Region/Queuing People Counting, Report Generation			
	Event Trigger	Motion Detection, Video Tampering, Audio Detection, Scene Changing, Network Disconnection, IP Address Conflict, Illegal Access, Storage Anomaly			
	Intelligent Search	Search people or vehicle detection events (SMD 3.0, Perimeter Protection), Search footage by face image and face attributes			
Network	Ethernet	RJ-45 (10Base-T/100Base-TX)			
	Protocol	IPv4; IPv6; HTTP; HTTPS; 802.1x; Qos; FTP; SMTP; UPnP; SNMP; DNS; DDNS; NTP; RTSP; RTP; TCP; UDP; IGMP; ICMP; DHCP; PPPoE; ARP; RTCP; NFS			
	Streaming Method	Unicast / Multicast			
	Max. User Access	20 Users			
Interface	Video Interface	N/A			
	Audio Interface	1 Input, 1 Output / Compression: PCM; G.711a; G.711Mu; G.726; MPEG2-Layer2; G.722.1			
	Alarm Interface	N/A			
	RS485	N/A			
	Edge Storage	MicroSD Card (up to 512GB) / FTP / P2P / NAS			
Environmental	Interoperability	ONVIF / CGI / SDK			
	Power Supply	12VDC 2A / PoE (802.3af)			
	Power Consumption	<4W / <13W (IR on)			
	Operating Conditions	-30° ~ +60° C / ≤95% RH			
	Ingress Protection	IP66			
	Vandal Resistance	IK08			
	Housing	Metal			
	Pan/Tilt/Rotation	N/A			
	Dimensions	Ø128mm x 66mm			
	Net Weight	0.5kg			
Ceiling Mount		Wall Mount	Corner Mount	Pole Mount	Pole Mount
VSBKTA107 + VSBKTB220C (+ VSBKTA117 extension)		VSBKTA107 + VSBKTB305W	VSBKTA107 + VSBKTB305W + VSBKTA120 + VSBKTA151	VSBKTA107 + VSBKTB305W + VSBKTA150	VSBKTA107 + VSBKTB220C + VSBKTA150

Your local VIP Vision™ IP solutions professional: