

- AI People & Vehicle Detection Gen.2
- AI Scene Adaptive
- 24/7 Colour
- Intruder Deterrence
- AcuPick search
- 8.0 MEGAPIXEL
- 6.0 MEGAPIXEL



# 3-in-1 deterrence solution

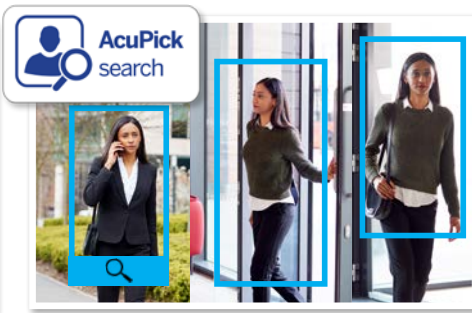
## Professional AI Series: Fixed lens AI active deterrence turrets in 6.0MP and 8.0MP

The Professional AI Series utilises the latest in AI machine learning technology to identify people & vehicles with superior accuracy and reliability. The active deterrence range incorporates AI detection and a variety of in-camera features to deter intruders. Upon a human or vehicle detection event, these cameras can trigger a white LED spotlight for security lighting, a flashing blue/red LED strobe and a loud siren with programmable message/tone, to deter intruders. Quickly search and track people & vehicles across all Acupick CCTV cameras in your security system.

- Stream up to 8.0MP (3840 x 2160) at 25fps
- Intelligent search across all Acupick cameras
- Activates spotlight, flashing light & siren, switching from IR to colour footage in response to alarm events
- 24/7 Colour low light footage as low as 0.004lx
- Up to 30m infrared, BLC/HLC & true WDR (120dB)
- Intelligent AI detection to identify people & vehicles
- Next-Gen Smart Motion Detection (SMD 4.0) & Perimeter Protection to prevent false alarms, using VIP Vision NVRs
- AI SSA detects/adjusts exposure to ensure clear video.



Spotlight, Siren & Blue/Red Strobe



Intelligent people & vehicle search



AI Adapts Scene for Best Picture

Specifications	6.0MP Fixed AI Deterrence Turret	8.0MP Fixed AI Deterrence Turret	
<b>Ordering Information</b>	<b>VSIPP-6DG-ID4</b>	<b>VSIPP-8DG-ID4</b>	
<b>Image Sensor</b>	1/2.7" 6.0MP Progressive Scan CMOS	1/2.7" 8.0MP Progressive Scan CMOS	
<b>Effective Pixels</b>	3072 (H) x 2048 (V)	3840 (H) x 2160 (V)	
<b>RAM / ROM</b>	2G / 256MB		
<b>Min Illumination</b>	0.005 Lux/F1.4 (Color, 30 IRE), 0.0005 lux/F1.4 (B/W, 30 IRE), 0 lux (IR)	0.004 Lux/F1.0 (Color), 0.0004 lux/F1.0 (B/W, 30 IRE), 0 lux (IR)	
<b>Electronic Shutter</b>	1/3 ~ 1/100,000s		
<b>S/N Ratio</b>	> 56dB		
<b>Infrared System</b>	1 x Infrared LED, 30m range, Auto/manual on/off control		
<b>LED Illumination</b>	1 x Spotlight (Warm White), 1 x Red & Blue Alarm Light		
<b>Lens / Iris</b>	2.8mm F1.0 Fixed Lens		
<b>Field of View</b>	Horizontal: 97°, Vertical: 70°, Diagonal: 128°	Horizontal: 106°, Vertical: 55°, Diagonal: 125°	
<b>Focus</b>	Auto Focus / 1.5m Min. Focus Distance		
<b>DORI</b>			
Detect (25px/m)	66m		
Observe (63px/m)	26m		
Recognise (125px/m)	13m		
Identify (250px/m)	7m		
<b>Resolution</b>	6.0MP (3072 x 2048) to CIF (352 x 288 288/352 x 240)	8.0MP (3840 x 2160) to CIF (352 x 288 288/352 x 240)	
<b>Frame Rate</b>	<b>Main</b>	6.0MP (1 ~ 25fps)	
	<b>Sub</b>	704 x 576 (1 ~ 25fps)	
	<b>Third</b>	1080p (1 ~ 25fps)	
<b>Video Compression</b>	H.265+ / H.265 / H.264+ / H.264 / H.264B / MJPEG		
<b>Bit Rate</b>	H.265: 3 ~ 16384Kbps / H.264: 3 ~ 16384Kbps		
<b>Bit Rate Control</b>	Constant Bit Rate (CBR) / Variable Bit Rate (VBR) / Average Bit Rate (ABR)		
<b>Day/Night</b>	Auto (ICR) / Colour / B&W		
<b>Lighting Compensation</b>	BLC / HLC / WDR (120dB)		
<b>Smart Scene Adaptive</b>	SSA		
<b>White Balance</b>	Auto / Natural / Street Lamp / Outdoor / Manual / Regional Custom		
<b>Gain Control</b>	Auto		
<b>Noise Reduction</b>	3D DNR		
<b>Picture Control</b>	Mirror / Flip (0°, 90°, 180°, 270°)		
<b>Video Functions</b>	Motion Detection (4 zones), Region of Interest (4 zones), Privacy Masking (4 zones), Smart Illumination, Defog, Object Abandoned / Missing <b>Event Triggers:</b> Motion Detection, Perimeter Protection, Video Tampering, Scene Changing, Network Disconnection, IP Address Conflict, Illegal Access, Storage Anomaly		
<b>AI Functions</b>	<b>Perimeter Protection:</b> People and vehicle detection using tripwire or intrusion rules <b>Loitering detection:</b> People gathering and parking detection <b>Acupick:</b> Search by people/vehicle attribute (e.g colour) and track their movements		
<b>Intelligent search</b>	Search people or vehicle detection events (Perimeter Protection), Search by attributes, such as clothing/vehicle colour and vehicle type (AI Quick Pick)		
<b>Ethernet</b>	RJ-45 (10/100Base-T)		
<b>Protocol</b>	IPv4; IPv6; HTTP; TCP; UDP; ARP; RTP; RTSP; RTCP; RTMP; SMTP; FTP; SFTP; DHCP; DNS; DDNS; QoS; UPnP; NTP; Multicast; ICMP; IGMP; NFS; SAMBA; PPPoE; SNMP, P2P		
<b>Streaming Method</b>	Unicast / Multicast		
<b>Max. User Access</b>	20 Users (Total bandwidth: 64MB)		
<b>Video Interface</b>	N/A		
<b>Audio Interface</b>	Built-in Mic & Built-in Speaker, 1 Audio In/Output (RCA) / Audio Compression - PCM; G.711a; G.711Mu; G.726; G.723		
<b>Alarm Interface</b>	1 channel in: 5mA 3-5VDC / 1 channel out: 300mA 12VDC		
<b>RS485</b>	N/A		
<b>Edge Storage</b>	MicroSD Card (up to 256GB) / NAS / FTP / SFTP		
<b>Interoperability</b>	ONVIF (Profile S, Profile G, Profile T) / P2P / CGI / Milestone		
<b>Power Supply</b>	12VDC / PoE		
<b>Power Consumption</b>	< 8.6 W (12VDC); < 10.1 W (PoE)		
<b>Operating Conditions</b>	-40°C ~ +60°C / ≤95% RH		
<b>Ingress Protection</b>	IP67		
<b>Vandal Resistance</b>	N/A		
<b>Housing</b>	Metal		
<b>Pan/Tilt/Rotation</b>	Pan: 0° ~ 360°, Tilt: 0° ~ 78°, Rotation: 0° ~ 360°		
<b>Dimensions</b>	Ø122mm x 111mm		
<b>Net Weight</b>	0.75kg		
<b>Accessories</b>		<b>Junction Box</b>	<b>Ceiling Mount</b>
		VSBKTA137 or VSBKTA130E	VSBKTA109 + VSBKTB220C
		<b>Wall Mount</b>	<b>Pole Mount</b>
		VSBKTB205W-E or VSBKTB203W	VSBKTB205W-E + VSBKTA152E

Your local VIP Vision™ IP solutions professional: