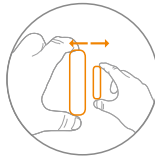


## Connect Door Sensor to Control Panel:

---

The new-bought door sensors should be enrolled to the control panel before use.

Press enroll button of control panel, trigger the sensor by moving the magnet away from the sensor. The enrolled sensors will automatically appear in the Accessories Menu in the app. You can customize the accessory name, select the zone type and also delete the accessory from the app, if required. For specified operation, please refer to the manual of alarm system.



## Specifications:

---

Power Supply: DC1.5V/AA battery

Standby Current:  $\leq 25\mu\text{A}$

Alarm Current:  $\leq 70\text{mA}$

Wireless Transmit Distance:  $\leq 80\text{m}$  (in open area)

Wireless RF Frequency: FHSS 433MHz

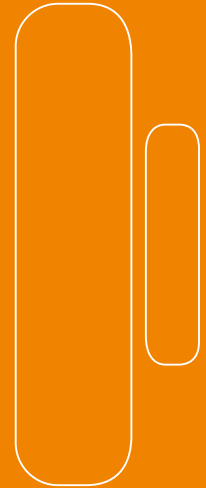
Temperature:  $-10^{\circ}\text{C}$ - $55^{\circ}\text{C}$

Humidity:  $\leq 80\%$  (Non-condensing)

Detector Dimensions (L x W x H): 28 x 96.5 x 19.5 mm

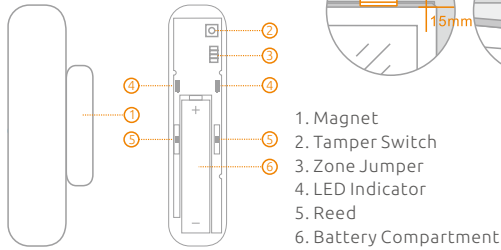
Magnet Dimensions (L x W x H): 14 x 48 x 11 mm

# Door / Window Sensor User Manual



## Features:

The Door/Window Sensor can be installed on doors, windows and any other objects that open and close. The sensor transmits signal to the control panel when the two parts are moved away from each other. Tamper protection ensures that any sabotage attempts will result in alarm activation.



**Tamper Alarm:** Once intruder attempts to move the sensor, the control panel will send tamper alarm message to user at the first time.

**Zone Jumper:** Please follow manual of alarm system for zone setup. The door sensor is set in normal zone1 as default.

## Working Status:



**LED flashes once :**

Door or window is opened, and the transmitter sends signal to the control panel. Or tamper alarm is triggered.

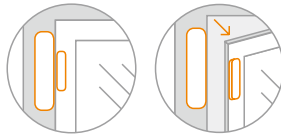


**LED flashes once per 3 seconds :**

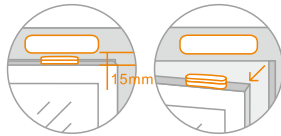
Low battery indication.

If it's in low battery state, please replace it immediately.

### Vertical Installation

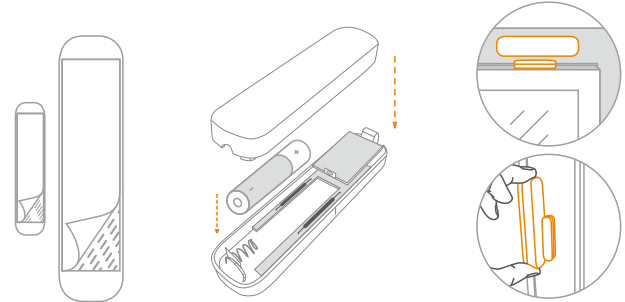


### Horizontal Installation



## Installation:

1. Open the back cover of the sensor, pull out the battery tab and check the battery is fitted properly.
2. Ensure the area that the sensor will be located is clean and free from dust and moisture. Avoid mounting the sensor in areas with lots of metal or electrical wiring.
3. Use the adhesive strip to carefully mount the sensor on to the door/window frame.
4. Mount the magnet on to the door/ window, no more than 1cm from the sensor.



Recommended installation for gap between moving part and frame



It will cause an immediate alarm if the magnet depart from the transmitter more than 2cm in arming state.



<1cm