



PTZ perimeter protection.

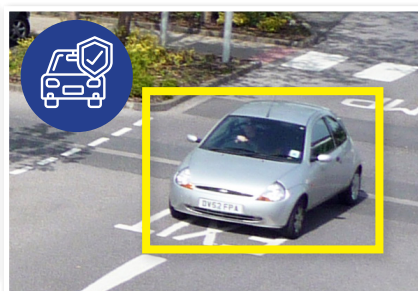
Professional PTZ AI Series: Versatile PTZ domes available in 2.0MP

Offer a versatile surveillance experience and ensure all areas are covered with up to 25x optical zoom, auto-tracking and fast endless 360° panning. Experience impressive AI powered video analytics and filter false alarms with AI face detection and AI Perimeter Protection technology.

- Stream up to 1080p (1920 x 1080) at 25fps
- H.265 encoding for efficient storage & streaming
- Ultra 2D/3D DNR; auto white balance; true day/night
- True WDR (120dB) and up to 150m infrared
- Endless 360° panning and -15° ~ 90° tilt adjustable
- Perimeter Protection to identify people & vehicles
- Combine Perimeter Protection with Tripwire/Intrusion to prevent false alarms, all using any VIP Vision NVR
- Power by PoE+ (802.3at) or 24VAC (PSU included)
- IP67 weather rated, lightweight dome housing



Double Full HD Resolution



Smart Perimeter Protection



Up to 25x Lossless Optical Zoom

Specifications		2.0MP 25x Optical Zoom PTZ with AI	
Ordering Information		VSIPPTZ-2IRP-I2	
Camera	Image Sensor	1/2.8" 2.0MP Starvis™ CMOS	
	Effective Pixels	1920 (H) x 1080 (V)	
	RAM / ROM	1GB	
	Min Illumination	0.005 Lux/F1.3 (Colour), 0.0005 Lux/ F1.3 (B/W)/, 0 Lux (IR Light On)	
	S/N Ratio	≥55 dB	
Infrared System		4 x Infrared LED, 150m range, Zoom Prio/Auto/Manual/Smart IR On/Off control	
Lens	Lens / Iris	4.8mm ~ 120mm, F1.6 ~ F3.5, Motorised Lens	
	Field of View	H: 58.5°-2.8°; V: 33.2°-1.5°; D: 67.5°-3.2°	
	Focus	Auto/Semi-Auto/Manual / 0.1m ~ 1.5m Min. Focus Distance	
DORI	Detect (25px/m)	1614m	
	Observe (63px/m)	646m	
	Recognise (125px/m)	323m	
	Identify (250px/m)	161m	
Pan / Tilt Range		Pan: 0° ~ 360° (endless) / Tilt: -15° ~ 90°	
PTZ	PTZ Speed	Preset: Pan: 400°/s; Tilt: 300°/s Manual: Pan: 300°/s; Tilt: 200°/s	
	Modes / Presets	Up to 300 presets / 5 Pattern, 8 Tour, 5 scanning, Auto Pan, Auto Scan	
	Start-up Action	Auto-restore to previous PTZ/lens status	
	Auto Tracking	Support (Deep-Learning)	
Video	Resolution	1080p (1920 x 1080) to CIF (352 x 288)	
	Frame Rate	Main	1080p (1 ~ 25/30fps)
		Sub	D1(1 ~ 25/30fps)
		Third	1080p (1 ~ 25/30fps)
	Video Compression	H.265/H.265+/H.264+/H.264/MJPEG (sub stream)	
	Bit Rate	H.265/H.264: 3 kbps-20480 kbps	
	Bit Rate Control	Constant bit rate (CBR) / Variable bit rate (VBR)	
	Day/Night	Auto (ICR) / Color / B&W	
	Lighting Compensation	BLC / HLC/ WDR (120dB)	
	White Balance	Auto / Indoor / Outdoor / Tracking / Manual / Sodium lamp / Natural light / Street lamp	
	Gain Control	Auto / manual	
Noise Reduction	2D / 3D		
Picture Control	Flip 0°/180°		
I/V/S	Intelligent Functions	Abandoned/Missing Object, Motion Detection, Region of Interest, Electronic Image Stabilisation, Privacy Masking (24 zones), Defog	
	Perimeter Protection	Tripwire & Intrusion (Add recognition of humans & vehicles)	
	Intelligent Search	Via NVR Smart Search, Search tripwire/intrusion events by people or vehicle	
	SMD	Filter motion detection alarms, recognises humans and vehicles from other moving objects	
Metadata		Supports human, motor vehicles and non motor vehicle search. Supports face image capture and footage search by face image & facial attributes	
Network	Ethernet	RJ-45 (10/100Base-T)	
	Protocol	IPv4; IPv6; HTTP; HTTPS; 802.1x; Qos; FTP; SMTP; UPnP; SNMPv1/v2c/v3 (MIB-2); DNS; DDNS; NTP; RTSP; RTP; TCP; UDP; IGMP; ICMP; DHCP; PPPoE; ARP; RTCP	
	Streaming Method	Unicast / Multicast	
	Max. User Access	20 Users	
Interface	Video Interface	N/A	
	Audio Interface	1 Input / 1 Output / Compression: G.711A; G.711Mu; G.726; AAC; G.722.1; G.723; G.729; PCM; MPEG2-Layer2	
	Alarm Interface	2 Inputs/ 1 Outputs	
	RS485	N/A	
	Edge Storage	FTP; Micro SD card (256G); P2P	
Environmental	Interoperability	ONVIF Profile S&G; CGI	
	Power Supply	24VDC/2.5A (±25%) / PoE+ (802.3at)	
	Power Consumption	<13W / <22W (IR on)	
	Operating Conditions	-40° ~ +70° C / Less than 95% RH	
	Ingress Protection	IP67	
	Vandal Resistance	N/A	
	Surge Protection	TVS 6000V Lightning Protection / Surge Protection	
	Housing	Metal	
	Pan/Tilt/Rotation	N/A	
Dimensions	Ø190mm x 332mm		
Net Weight	4.7kg		

Application

Included accessories:
AC PSU, VSBKTA110,
VSBKTB303W

Ceiling Mount
VSBKTB300C

Junction Box
VSBKTA120

Power Box Mount
VSBKTA140

Pole Mount
VSBKTA150

Corner Mount
VSBKTA151

Parapet Mount
VSBKTB303S