

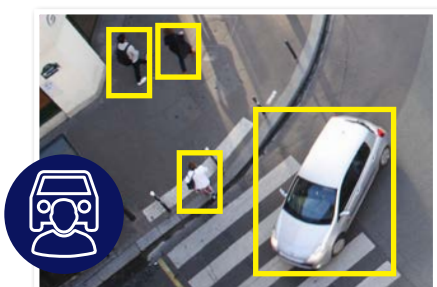


# Upgrade to AI with Pro Series.

Professional Series: Artificial intelligence HDCVI DVR in 8, 16 and 32 channels

Transform your existing low-resolution surveillance system into an Ultra HD AI system with the Securview Professional Series. Upgrade coaxial based systems to HDCVI (high definition composite video interface) and gain access to AI functionality\*, 4K recording at 7fps and cross compatibility for IP, analogue and other coax technologies. These DVRs are fantastic for existing coax cable system upgrades and for upgrades on a budget that wish to use existing cameras.

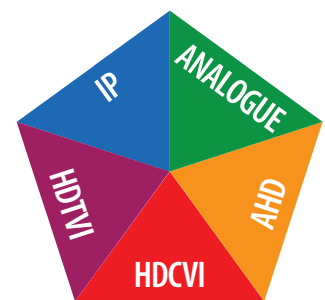
- Record up to 8.0MP (3840 x 2160) at 7fps (HDCVI)
  - Supports analogue, HDTV I and AHD camera inputs
  - Supports additional IP channels\* via the network up to 8.0MP / 4K with up to 128Mbps incoming bandwidth
  - Up to 8 HDD bays for up to 128TB of footage storage
  - AI human/vehicle detection via motion by DVR
  - AI human/vehicle tripwire/intrusion by DVR
  - Allow/block access with AI face recognition
- \*Addition of IP cameras disables the DVR's AI functions*  
*\*\*IP cameras with built-in AI cannot use AI functions*



AI Human & Vehicle Detection



AI Face Detection & Recognition



Camera Cross Compatibility

Model		CVR8PRO5	CVR16PRO5	CVR32PRO5	
General	Video Input	8 channel BNC	16 channel BNC	32 channel BNC	
	Camera Configurations	Coaxial: 8 channels up to 8.0MP/7fps (HDCVI), 960H/25fps (analogue)	Coaxial: 16 channels up to 8.0MP/7fps (HDCVI), 960H/25fps (analogue)	Coaxial: 32 channels up to 8.0MP/7fps (HDCVI), 960H/25fps (analogue)	
		Network: Add 8 additional channels up to 8.0MP Max 128Mbps Incoming Bandwidth *Enabling IP channels disables AI / IVS functions	Network: Add 16 additional channels up to 8.0MP Max 128Mbps Incoming Bandwidth *Enabling IP channels disables AI / IVS functions	Network: Substitute up to 32CH coax for IP (No additional IP channels) Max 128Mbps Incoming Bandwidth *Enabling IP channels disables AI / IVS functions	
	Main Processor / OS	Embedded Processor, embedded Linux OS			
Remote View	IOS (iPhone, iPad); Android devices				
Recording	Maximum Resolution	8.0MP (3840 x 2160) / 4.0MP (2560 x 1440) / 1080p (1920 x 1080)			
	Frame Rate	Main: 8.0MP (1~7fps) / 6.0MP (1~10fps) / 5.0MP (1~12fps) / 4.0MP & 3.0MP (1~15fps) / 1080p (1~25fps) / Sub: 960H (1~15fps) / D1 (1~25fps)			
	Video Compression	AI Coding / H.265+ / H.265 / H.264+ / H.264			
	Bit Rate	32Kbps ~ 6144Kbps Per Channel			
	Record Modes	Manual / Schedule (Regular, Continuous) , Motion Detection (Video Detection, Motion Detection, Video Loss, Tampering), Alarm			
	Backup Modes	USB Device / Network	USB Device / Network	USB Device / Network/ eSATA	
	HDD	2 x SATA bays, up to 16TB per bay	2 x SATA bays, up to 16TB per bay	8 x SATA bays, up to 16TB per bay	
Interface	Audio	4 channel input (RCA), 1 channel output (RCA)	4 channel input (RCA), 1 channel output (RCA)	16 channel input (BNC), 1 channel output (BNC)	
	Alarm	Interface	8 channel input, 3 relay output	16 channel input, 3 relay output	16 channel input, 5 relay output, 12V1A output
		Types	General (motion, video loss, scene change, etc.), Anomalies (camera disconnect, disk full, IP conflict , etc.), Intelligent (AI alerts, face, human/vehicle, etc.)		
		Actions	Begin record, take snapshot, camera external alarm output, access controller, audio, buzzer, DVR log, camera preset, email		
	Display	Input	1 x HDMI (up to 3840 x 2160), 1 x VGA (up to 1920 x 1080)	1 x HDMI (up to 3840 x 2160), 1 x VGA (up to 1920 x 1080)	2 x HDMI (1 output up to 3840 x 2160), 1 x VGA (up to 1920 x 1080), 1 x TV (BNC)
		Split	1 / 4 / 8 / 9 (16 w/ IP extension mode enabled)	1 / 4 / 8 / 9 / 16 (25 / 36, IP extension mode enabled)	1 / 4 / 8 / 9 / 16 / 25 / 36
	Network	Input	1 x 1000Mbps Ethernet uplink	1 x 1000Mbps Ethernet uplink	2 x 1000Mbps Ethernet uplinks
Functions		HTTP, HTTPS, TCP/IP, IPv4, RTSP, UDP, SMTP, NTP, DHCP, DNS, DDNS, P2P			
USB & Other Inputs	1 x Front USB 2.0, 1 x Rear USB 3.0 / 1 x RS-485	1 x Front USB 2.0, 1 x Rear USB 3.0 / 1 x RS-485	2 x Front USB 2.0, 2 x Rear USB 3.0 / 1 x RS-485 / 1 x RS-232 / 1 x eSATA		
Artificial Intelligence	Supported AI Functions	Face Detection, Face Recognition, AI Human/Vehicle Detection (AI functions compatible with BNC channels only; AI using additional IP channels and in-camera AI functions are not supported)			
	Face Detection	Function	Gender, Age Group, Glasses, Expressions, Face Mask, Beard		
		Capacity	2 channels (up to 12 faces per second, per channel)	2 channels (up to 12 faces per second, per channel)	6 channels (up to 12 faces per second, per channel)
	Face Recognition	Function	Supports up to 10 face databases and 20,000 face images		
		Capacity	2 channels	2 channels	6 channels
Human/Vehicle Detection	Function	AI Tripwire & Intrusion (IVS), AI Motion Detection (SMD)			
	Capacity	IVS: 8 channels (general) / 2 channels (advanced) (10 rules per channel) SMD: 8 channels	IVS: 8 channels (general) / 2 channels (advanced) (10 rules per channel) SMD: 16 channels	IVS: 12 channels (general) / 6 channels (advanced) (10 rules per channel) SMD: 32 channels	
Environment	Power Supply	12VDC/4A	12VDC/5A	100-240 VAC, 50/60 Hz	
	Power Consumption	<10W (without HDD)	<15W (without HDD)	<30 W (without HDD)	
	Operating Environment	-10 ~ 55°C / 10 ~ 90%RH			
	Dimensions	375mm x 289mm x 53mm	375mm x 289mm x 53mm	439.9mm x 463mm x 94.9mm	
	Weight	1.6kg (without HDD)	1.8kg (without HDD)	7kg (without HDD)	
Application	Dimensions				
	Rear Panel				

Your local Securview™ HDCVI solutions professional: