

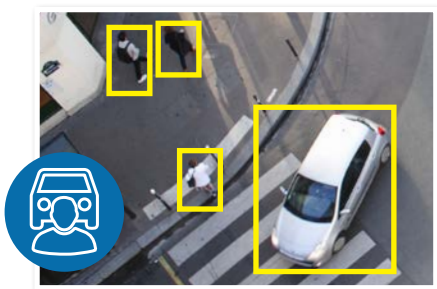


Superb AI surveillance kits.

Watchguard G-Series: 6.0MP AI surveillance kits, in 4, 8 and 16 channels.

Watchguard™ G Series AI CCTV kits are high performance AI surveillance systems ideal for home & small business, available at an affordable price. These kits combine AI cameras & recorders to deliver the best in AI functions including human/vehicle detection, face recognition & quick searching via AI events. These CCTV packages include high resolution AI turret domes, built-in PoE NVR for easy installation & surveillance-grade HDD designed for 24/7 surveillance capture.

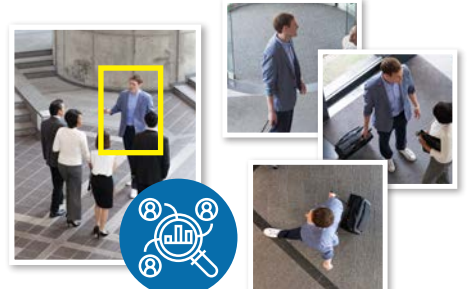
- Records up to 6.0MP (3072 x 1728 pixels) at 25fps
- Up to 30m infrared range; true day/night (auto ICR)
- Pre-fitted surveillance-grade HDDs (up to 4TB)
- AI human & vehicle detection via motion or IVS rules
- AI face recognition with allowlist & blacklist functions
- Optimal image enhancement via AI scene adaptive
- Native Ultra HD live view on 4K monitors via HDMI
- Built-in Power over Ethernet (PoE) for easy installation
- Remote view for iOS, Android & Windows devices
- IP67 weather rated, full metal camera housing



AI Human & Vehicle Detection



AI Face Detection & Recognition



Quick Search via AI Event

Kits that scale to your requirements.

The Watchguard™ G Series is available in 4, 8 and 16 channel packages. They include security cameras (with the option to add cameras (8/16 only)), video recorder and surveillance grade HDD for long term footage storage.

Kit Model	NVRKIT-G461-4C	NVRKIT-G462-4C	NVRKIT-G862-6C	NVRKIT-G1664-10C
Kit Image				
Network Video Recorder	NVR4COM-I with 4 Port PoE & 1 x SATA Bay		NVR8COM-I with 8 Port PoE & SATA Bay	
Included Storage	1TB Surveillance HDD	2TB Surveillance HDD	2TB Surveillance HDD	
Included Cameras	4x VSIPP-6DIRG-I2 Turret		6x VSIPP-6DIRG-I2 Turret	
Included Accessories	1 x 1.5m CAT5 patch cable for networking / 1 x 1m HDMI output cable / 1 x NVR Remote and 1 x Mouse <i>*Camera cabling sold separately*</i>			

Kit Specifications

For full specifications and bracket compatibility, please refer to individual product web entries or datasheets.

NVR Model	NVR4COM-I	NVR8COM-I	NVR16COM-I
Product Image			
Video Input	4 channel	8 channel	16 channel
Video Output	1 x HDMI, 1 x VGA		
Recording Resolution	Configurable from 16.0MP (4910 x 3264) to CIF (352 x 288)		
Incoming Bandwidth	80Mbps (incoming/recording/outgoing)	256Mbps (incoming/recording/outgoing)	256Mbps (incoming/recording/outgoing)
Video Compression	Video: Smart H.265+ / H.265 / H.264 / H.264+ / MJPEG		
Power Consumption	<10W (without HDD) / PoE: Max 25.5W for single port, 36W total	<10W (without HDD) / PoE: Max 25.5W for single port, 72W total	<10W (without HDD) / PoE: Max 25.5W for single port, 130W total
PoE	4 ports (IEEE 802.3 af/at)	8 ports (IEEE 802.3 af/at)	16 ports (IEEE 802.3 af/at)
Remote View	iOS (iPhone, iPad) / Android devices / Windows Phone* (limited functionality)		
Internal HDD	1 x SATA port up to 10TB max, 10TB HDD Capacity	1 x SATA port up to 10TB max, 10TB HDD Capacity	2 x SATA port up to 10TB max, 20TB HDD Capacity

Camera Model	VSIPP-6DIRG-I2
Product Image	
Image Sensor	1/2.7" 6.0MP Progressive Scan CMOS
Lens	2.8mm F2.0 Fixed Lens, Horizontal: 105°, Vertical: 56°; Horizontal: 97°, Vertical: 71°, Diagonal: 129°
Lighting Compensation	BLC / HLC / WDR (120dB)
Resolution	6.0MP (3072 x 1728) to CIF (352 x 288)
Infrared Range	2 x Infrared LED, 30m range, Auto/manual on/off control
Frame Rate	Main Stream: 6.0MP (1 ~ 25fps), Sub Stream: D1 (1 ~ 25fps), Third Stream: 1080p (1 ~ 25fps)
Smart Functions	AI People & Vehicle Detection (Smart Motion Detection, Tripwire & Intrusion Area Rules), AI Quick Pick Function, AI Weather & Anti-flicker, AI Scene Self-adaption
Housing	Metal enclosure, IP67
Power Supply	12VDC / PoE (802.3af) (Class 0)

Your local Watchguard™ IP surveillance professional:

www.activeonline.com.au 1300 816 742