



Active Online



Hybrid thermal imaging.

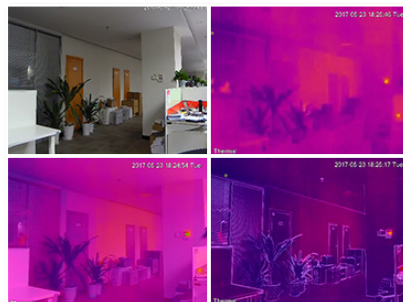
Hybrid Vision Thermal Series: Fixed lens hybrid cameras available in 4.0MP

By combining traditional image & thermal sensors, VIP Vision hybrid thermal cameras redefine your expectations of surveillance. Enhance images with Image Fusion thermal overlay, achieve excellent motion detection accuracy, setup thermal perimeters using IVS, and detect fires before they start, all in a compact weather rated chassis.

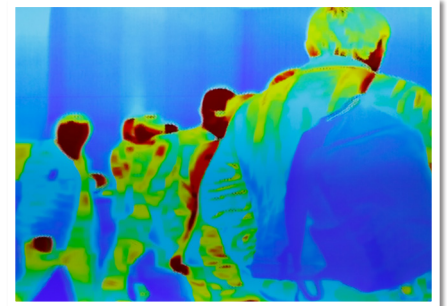
- Combination thermal and visible light surveillance
- 4.0MP visible light sensor with choice of fixed lenses
- One IP address/channel for thermal & visible images
- Set tripwire/intrusion rules; heat and fire detection
- Temperature measurement with triggers (-T only)
- VOx thermal sensor with 256 x 192px resolution
- Detects 8~14µm wavelength infrared spectral range
- White light & siren for thermal trigger event alerts
- Adjustable modes & alarm output for fire detection
- 30m IR illuminator, Alarm I/O, audio I/O, IP67 rated



Fire Detection & Alarm Output



Adjustable Hybrid Image Modes



18 Thermal Colour Palettes

		VSIPTC-4BIRG: 4.0MP Hybrid Thermal Bullet						VSIPTC-4DIRG: 4.0MP Hybrid Thermal Turret Dome						
Camera	Model Options	VSIPTC-4BIRG (standard): 3.5mm Thermal Lens, 4.0mm Visible Lens VSIPTC-4BIRG-78: 7.0mm Thermal Lens, 8.0mm Visible Lens VSIPTC-4BIRG-1012: 10.0mm Thermal Lens, 12.0mm Visible Lens Add -T to above for temperature measurement model						VSIPTC-4DIRG (standard): 3.5mm Thermal Lens, 4.0mm Visible Lens VSIPTC-4DIRG-22: 2.0mm Thermal Lens, 2.0mm Visible Lens VSIPTC-4DIRG-78: 7.0mm Thermal Lens, 8.0mm Visible Lens Add -T to above for temperature measurement model						
	Image Sensor	1/2.7" 4.0MP Progressive Scan CMOS												
	Effective Pixels	2336 (H) x 1752 (V)												
	Min Illumination	0.05 Lux/F1.8 (Color), 0 Lux/F1.8 (IR on)												
	Infrared System	1 x Infrared LED, 30m range, Auto/manual on/off control												
Thermal	Thermal Sensor	Vanadium oxide uncooled focal plane detector												
	Thermal Resolution	256 (H) x 192 (V), 12µm Pixel Pitch												
	Range & Sensitivity	Spectral Range: 8~14µm Sensitivity (NETD): <40mK (at f/1.0, 25 Hz, 300 K)												
	Image Settings	Digital Detail Enhancement, Auto Gain Control, 2D/3D Noise Reduction												
	Colour Palettes	18 thermal colour palettes (eg: WhiteHot, BlackHot, Rainbow etc.)												
Image Fusion Modes	Warm Colour, Cool Colour, Ironred													
Lens	Model	VSIPTC-4BIRG		VSIPTC-4BIRG-78		VSIPTC-4BIRG-1012		VSIPTC-4DIRG		VSIPTC-4DIRG-22		VSIPTC-4DIRG-78		
	Lens Type	Thermal	Visible	Thermal	Visible	Thermal	Visible	Thermal	Visible	Thermal	Visible	Thermal	Visible	
	Focal Length	3.5mm	4.0mm	7.0mm	8.0mm	10.0mm	12.0mm	3.5mm	4.0mm	2.0mm	2.0mm	7.0mm	8.0mm	
	Field of View	50°	71°	24°	33°	17°	22°	50°	71°	88°	94°	24°	33°	
	Aperture	F1.0	F1.6	F1.0	F2.0	F1.0	F2.0	F1.0	F1.6	F1.0	F2.2	F1.0	F2.0	
	Close Focus Distance	0.5m	1.0m	1.0m	2.5m	2.0m	2.5m	0.5m	1.0m	0.3m	0.3m	1.0m	2.5m	
	Thermal Detection Distance	Detect ¹	Vehicle: 449m Human: 146m		Vehicle: 897m Human: 292m		Vehicle: 1282m Human: 417m		Vehicle: 449m Human: 146m		Vehicle: 256m Human: 83m		Vehicle: 897m Human: 292m	
		Recognise ²	Vehicle: 110m Human: 38m		Vehicle: 220m Human: 75m		Vehicle: 314m Human: 107m		Vehicle: 110m Human: 38m		Vehicle: 63m Human: 21m		Vehicle: 220m Human: 75m	
		Identify ³	Vehicle: 56m Human: 19m		Vehicle: 111m Human: 38m		Vehicle: 159m Human: 54m		Vehicle: 56m Human: 19m		Vehicle: 32m Human: 11m		Vehicle: 111m Human: 38m	
	Guide to Thermal Detection Distance ¹²³	¹ Detect: Objects cover more than 3.6px of thermal image. Detects objects, but cannot recognize their characteristics. ² Recognise: Objects cover more than 14px of thermal image. Classifies objects into general categories, eg: human, vehicle. ³ Identify: Objects cover more than 28px of thermal image. Classifies objects into specific categories based on their characteristics, eg: 4WD, truck, car. Above information is approximate in nature in order to estimate the right camera for your needs; to be used as a guide only, actual results may vary.												
	Max. Heat Detection Distance ⁴	22m		40m		60m		22m		12m		40m		
		⁴ The table displays the measured distances obtained from using the target size 0.2 m x 0.2 m for testing in an environment where the temperature is 23 °C and the relative humidity is below 60%. The table is for reference only. The distances within it are subject to actual conditions including atmospheric conditions, target size, the installation site, and more.												
	Perimeter Protection Detection Distance ⁵	Human: 24m Vehicle: 72m		Human: 49m Vehicle: 146m		Human: 70m Vehicle: 209m		Human: 24m Vehicle: 72m		Human: 14m Vehicle: 42m		Human: 49m Vehicle: 146m		
		⁵ The table displays the measured distances obtained from using the target sizes 1.8m x 0.5m (human) and 1.4m x 4m (vehicle) for testing in an environment where the temperature is 23 °C and the relative humidity is below 60%. The table is for reference only. The distances within it are subject to actual conditions including atmospheric conditions, target size, the installation site, and more.												
Video	Resolution & Frame Rate	Visible: 4.0MP (2336 x 1752) ~ D1 (704 x 576) at 1~25fps Thermal: 1280 x 960 to 256 x 192 at 1~25fps Visible: 720p (1280 x 720) to CIF (352 x 288) at 1~25fps Thermal: VGA (640 x 480) to 256 x 192 at 1~25fps												
	Video Compression	H.265; H.264M; H.264H; H.264B; MJPEG												
	Bit Rate Control	Constant bit rate (CBR) / Variable bit rate (VBR)												
	Day/Night	Auto (ICR) / Color / B&W												
	Lighting Compensation	BLC / HLC / Digital WDR												
	White Balance	Auto / Natural / Street Lamp / Tracking / Outdoor / Manual												
	Gain Control	Auto / Manual												
	Noise Reduction	3D DNR												
Picture Control	90° / 180° / 270°													
IVS	Intelligent Functions	Tripwire Rules, Intrusion Rules, Motion Detection (4 zones), Region of Interest (4 zones), Privacy Masking (4 zones), Smart Infrared												
	Thermal Functions	Heat Detection & Alarm, Cold & Hot Spot Trace, Human & Vehicle Classification, Smoking Detection, Mobile Phone Use Detection												
Interface	Ethernet	RJ-45 (10/100 Base-T)												
	Network Protocol	IPv4/IPv6; HTTP; HTTPS; SSL; TCP/IP; UDP; UPnP; ICMP; IGMP; SNMP; RTSP; RTP; SMTP; NTP; DHCP; DNS; PPPoE; DDNS; FTP; IP Filter; QoS; Bonjour; 802.1x												
	Max. User Access	10 Users / 20 Users												
	Audio Interface	1 Input, 1 Output (RCA) / Compression: G.711a, G.711mu, AAC												
	Alarm Interface	1 Input / 1 Output												
	Edge Storage	MicroSD Card (up to 128GB) / NAS / Local PC												
	Interoperability	ONVIF / CGI												
Environmental	Power Supply	12VDC / PoE												
	Power Consumption	<8W~14W (12VDC), 4.8~12.3W (PoE)						<6.5W~13W (12VDC), 4.8~12.3W (PoE)						
	Operating Conditions	-30° ~ +50° C / Less than 95% RH												
	Ingress Protection	IP67												
	Vandal Resistance	N/A												
	Housing	Full Metal Enclosure												
	Dimensions & Weight	206mm x 91mm x 91mm, 0.90kg						122mm x 122mm x 112mm, 0.85kg						
Mounting Options	Junction Box: VSBKTA130E, Pole Mount: VSBKTA152E						Junction Box: VSBKTA130E, Wall Mount: VSBKTB203W, Ceiling Mount: VSBKTB220C + VSBKTA106							

Your local VIP Vision™ IP solutions professional:

www.activeonline.com.au 1300 816 742