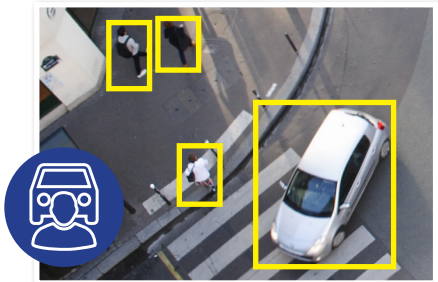


# AI surveillance for business.

## Professional AI Series: NVR available in 32 & 64 channels

Transform the way you secure your home or small business with VIP Vision™ Professional AI Series Network Video Recorders. Use superb accuracy AI detection to take the guesswork out searching footage and get important AI video notifications as they happen. Experience peace of mind with capacity for months of footage storage and integrate a huge range of cameras to protect what's most important to you.

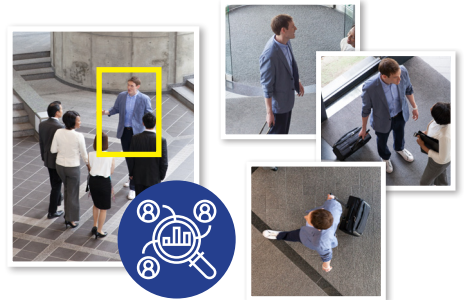
- Record up to 32.0MP with H.265 video compression
- Up to 384Mbps bandwidth (200Mbps AI enabled)
- Suite of AI functions for improved alerts & playback
- Supports AI face detection and recognition via NVR
- Supports AI human/vehicle detection via NVR
- Supports ANPR by camera up to 4 channels
- Up to 8 x SATA bay (HDD support), up to 16TB/bay
- HDMI (4K) and VGA simultaneous video output
- Backup via external USB device or local network
- 2 x 1000Mbps Ethernet network input



AI Human & Vehicle Detection



AI Face Detection & Recognition



Find Footage with AI Quick Search

		NVR32PRO-13	NVR64PRO-13	
General	Video Input	32 channel	64 channel	
	Processor & Operation	Industrial-grade processor, Embedded Linux OS, Web Interface / Local GUI		
	Interoperability	ONVIF 21.12(Profile T; Profile S; Profile G); CGI; SDK. Supports Panasonic, Sony, Samsung, Axis, Pelco, Arecont, Canon. Chrome, IE9 and later, Firefox support.		
	App Integration	iOS / Android		
Recording	Recording Resolution	Configurable from 32.0MP (6528 x 4896) to QCIF (176 x 144)		
	Network Bandwidth	AI Disabled	384Mbps (incoming/recording/outgoing)	
		AI Enabled	200Mbps (incoming/recording/outgoing)	
	Video & Audio Compression	Video: Smart H.265+ / H.265 / H.264 / H.264+ / MJPEG, Audio: G.711a / G.711u / PCM / G726		
	Playback	Channels	Up to 16 channels	
		Modes	General Recording, Motion Detection, Intelligent Events, Alarm Triggers, POS	
	Decoding Capacity	AI Disabled	8CH@8.0MP/25fps, 32CH@1080P/25fps	
AI Enabled		24CH@1080p/25fps		
Backup Method	USB device / Network / eSATA			
Interface	HDD	4 x SATA bays, up to 16TB per bay	8 x SATA bays, up to 16TB per bay	
	Audio	1 channel input (RCA), 2 channel output (RCA)		
	Alarm	Interface	16 channels input, 6 channels output	16 channels input, 8 channels output
		Types	General (motion, video loss, scene change, etc.), Anomalies (camera disconnect, disk full, IP conflict, etc.), Intelligent (AI alerts, face, human/vehicle, etc.)	
		Actions	Begin record, take snapshot, camera external alarm output, access controller, audio, buzzer, NVR log, camera preset, email	
	Display	Input	2 x HDMI (up to 3840 x 2160), 2 x VGA (up to 1920 x 1080)	
		Split	1st Screen: 1/4/8/9/16/25/36, 2nd Screens: 1/4/8/9/16	1st Screen: 1/4/8/9/16/25/36/64, 2nd Screens: 1/4/8/9/16
	Network	Input	2 x 1000Mbps Ethernet	
		Functions	HTTP, TCP/IP, IPv4/IPv6, UPNP, RTSP, UDP, SMTP, NTP, DHCP, DNS, IP Filter, PPPOE, DDNS, FTP, Alarm Server, IP Search, Easy4ip	
	USB & Other Inputs	1 x Front USB 2.0, 2 x Rear USB 3.0 1 x RS-485, 1 x RS-232, 1 x eSATA		2 x Front USB 2.0, 2 x Rear USB 3.0 / 2 x RS485, 1 x RS-232, 1 x eSATA
NVR Operated AI	Face Detection, Face Recognition, AI Human/Vehicle Detection			
Supported Camera AI	Face Detection, Face Recognition, AI Human/Vehicle Detection, ANPR, People Counting, Heatmap, Video Metadata			
Artificial Intelligence	Face Detection	Functions	Gender, Age Group, Glasses, Expressions, Face Mask, Beard	
		By NVR	2 channels (up to 12 face images per second, per channel)	
	Face Recognition	By Camera	16 channels	
		Capacity	NVR Supports up to 20 face databases and 20,000 face images	
		By NVR	2 channels (Face detection via NVR video stream analysis; Face recognition performed by NVR)	
	Human/Vehicle Detection	By Camera	16 channels (Face detection performed via Face Capture cameras via image stream; Face recognition performed via NVR)	
		By Camera	16 channels	
	ANPR	Functions	AI Tripwire & Intrusion (IVS), AI Motion Detection (SMD)	
By Camera		IVS: 4 channels (10 rules per channel), SMD: 8 channels		
Video Metadata	By Camera	IVS: 16 channels, SMD: 16 channels		
	By Camera	Up to 20,000 plate numbers, blacklist & allowlist		
Environment	Power Supply	100-240 VAC / 50-60 Hz		
	Power Consumption	≤ 13W (without HDD)		
	Operating Environment	-10°C ~ +55°C / 10 ~ 93%RH		
	Dimensions / Rack Units	440mm x 415mm x 70mm / 1.5U		
Additional Information	Weight	4.74kg (without HDD)	6.4kg (without HDD)	
	Product Diagrams	<p>415.1 408.6</p> <p>1 Power Input 2 Network Ports 3 eSATA Port 4 HDMI Ports 5 USB Ports 6 VGA Ports 7 MIC IN, RCA Connector 8 Power Switch 9 Alarm In/Out 10 RS-232 Port 11 MIC OUT, RCA Connector</p>	<p>457.9 451.8</p> <p>1 Power Input 2 Network Ports 3 eSATA Port 4 HDMI Port 5 USB Ports 6 VGA Ports 7 MIC IN, RCA Connector 8 Power Switch 9 Alarm In/Out 10 RS-232 Port 11 MIC OUT, RCA Connector</p>	

Your local VIP Vision™ IP solutions professional:

[www.activeonline.com.au](http://www.activeonline.com.au) 1300 816 742