



Active Online

# ACTIVE ONLINE TRADE SPECIALS

SUPPORTING TRADE AND DIY-ERS AUSTRALIA WIDE

**CAMERAS · ALARMS · INTERCOMS · ACCESS · LIGHTING**  
**SOLAR · BATTERY STORAGE · DISPLAYS · ELECTRICAL**



## HOME INVASION DEFENCE

PROTECT AUSTRALIAN HOMES & BUSINESSES

**BUY ONLINE NOW: [ACTIVEONLINE.COM.AU](http://ACTIVEONLINE.COM.AU)**

**CALL 1300 816 742**

**FREE SHIPPING ON ORDERS OVER \$600**

**\*GST Inclusive price - Australia Only - T&C's Apply\***



Alarms & Surveillance

# The latest AI NVRs from VIP Vision & Watchguard



## AI Network Recorders

### The latest NVRs with built-in AI functionality

Add amazing AI features to new installs and upgrade existing IP CCTV to AI



**AI People & Vehicle Detection**  
Gen.1

#### NVR Powered AI

Built-in AI People & Vehicle Detection via NVR. Upgrade an NVR for AI or use AI detection without AI cameras. Up to 6m person; 9m vehicle detection (2.8mm lens). Capacity varies per NVR.



**Face Recognition**

#### FR as Standard

All AI NVRs now feature face database support and video-stream face detection/recognition, so even small CCTV implementations can utilise Face Recognition technology.



**AI Quick Search**

#### AI Quick Search

When paired with a Pro AI Series camera, your NVR enables footage search via clothing or vehicle colour when using AI motion detection. Zero in on all key playback events.

# Recorders for every job size



## Compact AI Series 4 - 16 Channel NVRs

- Record beyond Ultra HD up to 16.0MP (4920 x 3264)
- AI human/vehicle motion detection by NVR up to 4 channels
- AI human/vehicle tripwire/intrusion by NVR up to 2 channels
- AI face recognition and AI face database up to 1 channel
- Supports ANPR and people counting cameras
- Decodes 4CH@4K/25fps, up to 256Mbps network bandwidth
- Up to 2 x SATA ports for up to 20TB HDD storage



[Sign up for trade pricing](#)

**NVR4COM-I**  
(4CH, 4 PoE, 1 HDD)

**NVR8COM-I**  
(8CH, 8 PoE, 1 HDD)

**NVR16COM-I**  
(16CH, 16 PoE, 2 HDD)



## Pro AI Series 8 - 64 Channel NVRs

- Record beyond Ultra HD up to 32.0MP (4920 x 3264)
- AI human/vehicle motion detection by NVR up to 8 channels
- AI human/vehicle tripwire/intrusion by NVR up to 4 channels
- AI face recognition & AI face database up to 2 channels
- Supports ANPR, fisheye dewarp\*, people counting cameras
- Decodes up to 8CH@4K/25fps, up to 384Mbps bandwidth
- Up to 8 x SATA (16TB/bay), ePoE, alarm I/O, HDMI/VGA, eSATA
- \*Some features differ for NVR8PRO-I, see datasheet for detail



**NVR8PRO-I**  
(8CH, 2 HDD, PoE)

**NVR16PRO16P-I3**  
(16CH, 4 HDD, PoE)

**NVR32PRO16P-I3**  
(32CH, 4 HDD, 16 PoE)

**NVR32PRO-I3**  
(32CH, 4 HDD)

**NVR64PRO-I3**  
(64CH, 8 HDD)

[Sign up for trade pricing](#)



## Ultimate AI Series 64 & 128 Channel NVRs

- Record beyond Ultra HD up to 32.0MP (4920 x 3264)
- AI human/vehicle motion detection by NVR up to 32 channels
- AI human/vehicle tripwire/intrusion by NVR up to 24 channels
- AI face recognition & AI face database up to 4 channels
- AI video metadata (people and vehicle) up to 8 channels
- Decodes up to 8CH@4K/25fps, up to 1024Mbps bandwidth
- Supports ANPR, fisheye dewarp, people counting cameras
- 8 x SATA (16TB/bay), 2.5Gbps Ethernet, alarm I/O, eSATA, RS232
- 4 x HDMI, 2 x VGA with up to 4 multi-source display output



[Sign up for trade pricing](#)

**NVR64ULT-I**  
(64CH, 8 HDD)

**NVR128ULT-I**  
(128CH, 8 HDD)





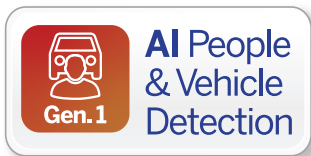
Alarms & Surveillance

# Watchguard CCTV kits now with AI detection built-in



## AI Network Packages Affordable AI Security Camera kits with HDDs

Watchguard CCTV kits now include AI cameras for human/vehicle detection



### AI Subject Detection

Up to 97% AI detection accuracy of people and vehicles when using AI motion detection or video rules. AI detects people up to 6m and vehicles up to 9m (2.8mm lens).



SKYHAWK

### Surveillance HDDs

Watchguard uses SkyHawk by Seagate, CCTV surveillance grade storage in all CCTV kits for superior reliability and long runtime under 24/7 recording conditions.



### 4-Year Warranty

The most affordable Watchguard IP CCTV systems also come with RhinoCo's industry leading 4-year warranty, backing the continued performance of Watchguard systems.



# LA-Series AI surveillance kits



Now with AI human/vehicle detection

**AI People & Vehicle Detection**  
Gen. 1

**6.0**  
MEGAPIXEL

**WARRANTY**  
**4**  
**YEARS**  
**WARRANTY**



## 6.0MP AI CCTV Kits with 4 Cams (2TB)

- 1 x Watchguard NVR, PoE, 1 x HDD bay, 80Mbps
- 1 x Pre-installed 2TB SkyHawk surveillance HDD
- 4 x AI human/vehicle detection turrets, 6.0MP@20fps, 2.8mm (105°), 30m IR, full metal IP67 housing, PoE/12VDC

**4 Channel**

NVRKIT-LA462-4C  
(4CH, 4CAMS, 2TB)

**8 Channel**

NVRKIT-LA862-4C  
(8CH, 4CAMS, 2TB)

*Sign up for trade pricing*



## 6.0MP LA-Series AI Turret Dome Camera

- AI human/vehicle detection via tripwire & intrusion rules, or smart motion detection
- Stream 6.0MP@20fps (3072 x 2048)
- 2.8mm lens (105°), 30m infrared
- Starlight, true WDR 120dB
- IP67 rated metal chassis
- Optional junction box & wall mount

VSIPL-6DIRG-1  
(6MP, 105°)

VSBKTB204W (wall)  
VSBKTA139 (box)



## SECURVIEW

### Pre-terminated CAT5e Data Leads

- Available in 10m, 20m & 30m for small IP installs
- Choose to complete your L-Series CCTV kit
- See full data cable range later in this brochure

NETCABLE10 (10m)  
NETCABLE20-Z (20m)  
NETCABLE30-Z (30m)





Professional IP Solutions

# Offer the latest in AI and performance with VIP Vision



## Pro AI Series

**4.0** MEGAPIXEL   **6.0** MEGAPIXEL   **4K** ULTRA HD

### The next generation in AI to drive your installs

Deliver amazing AI features with improved camera performance & image quality



**AI People & Vehicle Detection**  
Gen. 2

#### Improved AI Detection

Up to 99% AI detection accuracy of people and vehicles when using AI motion detection or video rules. AI detects people up to 12m and vehicles up to 18m (2.8mm lens).



**AI Scene Adaptive**

#### AI Scene Optimisation

Using deep learning algorithms, the camera will optimise in-camera settings such as WDR, exposure and brightness to automatically deliver the best video evidence result.



**AI Quick Search**

#### AI Quick Search

When paired with an AI NVR, your camera enables rapid footage search via clothing or vehicle colour when using AI motion detection. Quickly zero in on all key playback events.



# Eliminate false alarms with AI Person & Vehicle Detection

# AI

ARTIFICIAL INTELLIGENCE

## Huge range to suit whatever the job requires

4 different housings in 4MP, 6MP and 8MP to cater to almost every installation

**VSIPP-4DIRF-12**  
(4.0MP, Wedge)

**4.0 MEGAPIXEL**  
**6.0 MEGAPIXEL**  
**4K ULTRA HD**

**WARRANTY 4 YEARS**

- AI People & Vehicle Detection Gen. 2
- AI Scene Adaptive
- AI Quick Search
- Starlight Camera

**VIP vision**

### Pro AI Series Fixed Lens Cameras

- Available in vandal dome, bullet or turret
- Next generation image quality & AI features
- 4.0/6.0/8.0MP@25fps, wide angle 2.8mm lens, up to 30m infrared, Starlight, microSD, WDR, IP67 weather rated (IK10 dome, wedge dome)

4.0 Megapixel	6.0 Megapixel	8.0 Megapixel
VSIPP-4BIRG-12 (Bullet)	VSIPP-6BIRG-12 (Bullet)	VSIPP-8BIRG-12 (Bullet)
VSIPP-4DIRD-12 (Dome)	VSIPP-6DIRD-12 (Dome)	VSIPP-8DIRD-12 (Dome)
VSIPP-4DIRG-12 (Turret)	VSIPP-6DIRG-12 (Turret)	VSIPP-8DIRG-12 (Turret)
	VSIPP-6DIRG-12-B (Black)	VSIPP-8DIRG-12-B (Black)

[Sign up for trade pricing](#)

**4.0 MEGAPIXEL**  
**6.0 MEGAPIXEL**  
**4K ULTRA HD**

**WARRANTY 4 YEARS**

- AI People & Vehicle Detection Gen. 2
- AI Scene Adaptive
- Starlight Camera
- AI Quick Search

**VIP vision**

### Pro AI Series Varifocal Cameras

- Available in vandal dome, bullet or turret
- Next generation image quality & AI features
- 4.0/6.0/8.0MP@25fps, 2.7~13.5mm motorised varifocal lens, up to 60m infrared, Starlight, microSD, WDR, IP67 weather rated (IK10 dome)

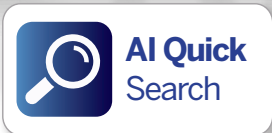
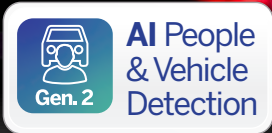
4.0 Megapixel	6.0 Megapixel	8.0 Megapixel
VSIPP-4BIRMG-12 (Bullet)	VSIPP-6BIRMG-12 (Bullet)	VSIPP-8BIRMG-12 (Bullet)
VSIPP-4DIRMD-12 (Dome)	VSIPP-6DIRMD-12 (Dome)	VSIPP-8DIRMD-12 (Dome)
VSIPP-4DIRMG-12 (Turret)	VSIPP-6DIRMG-12 (Turret)	VSIPP-8DIRMG-12 (Turret)

[Sign up for trade pricing](#)



Professional IP Solutions

# Install CCTV, security lighting & alarm in a single camera



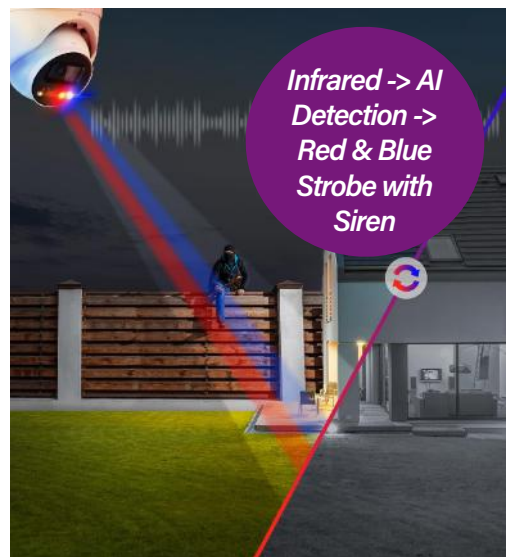
## Pro AI Series Active Deterrence Turret Cameras

- 6.0MP and 8.0MP turret domes with the latest Pro AI Series features
- Superior 24/7 colour low light performance and AI scene adaptive
- 30m infrared illumination for discreet operation pre-detection; White LED light can be customised for always-on or on-trigger
- Red/blue LED light & siren activates on AI people/vehicle detection
- Easy one-tap arming & disarming via phone/tablet application
- Customisable siren tones or voice messages play on trigger
- Speak remotely via the smartphone/tablet application
- Stream up to 6.0MP@25fps / 8.0MP@25fps, fixed lens 2.8mm (97°)
- Built-in dual mics and 1/1 alarm interface (input/output)
- MicroSD slot, H.265+, true WDR (120dB), IP67 weather rated

VSIPP-6DG-ID3  
(6.0MP Turret)

VSIPP-8DG-ID3  
VSIPP-8DG-ID3-B  
(8.0MP, (-B) Black)

**Sign up for trade pricing**







Professional IP Solutions

# 180° panoramic video + active deterrence from VIP Vision



Intruder Deterrence



Alarm Light & Spotlight



AI People & Vehicle Detection Gen. 2



24/7 Colour



Safeguard entire areas with a single camera



## Pro AI Series 180° Active Deterrence Cameras

- Dual 4.0MP sensor & lens outputs 180° panoramic images
- Combined 8.0MP (4096 x 1860) image, streams at 20 fps
- AI people/vehicle detection via IVS & smart motion detection
- True wide dynamic range adaptable to various lighting
- 24/7 colour images in challenging lighting conditions
- Built-in dual IR LEDs (25m) and white LED lights (20m)
- AI activated red/blue LED strobing lights & siren
- Built-in microphone and loudspeaker for 2-way talk
- Easy one-tap arming & disarming via mobile app
- RCA audio out, MicroSD slot for edge recording
- Customisable siren tones or voice messages; speak remotely via the smartphone/tablet application

VSIPP-8BD-ID3 (8.0MP Bullet)  
VSIPP-8DD-ID3 (8.0MP Turret)

[Sign up for trade pricing](#)



Professional IP Solutions

# Combine infrared and visible light for incredible results



**Dual Lens Technology**



**Face Capture**



**24/7 Colour**



**People Counting**



**AI People & Vehicle Detection**



**800m Extended PoE**



## Ultimate AI Series Dual Lens Turret Camera

- Combines infrared & visible light images for detail in low light scenes
- Combined images preserve colour detail where minimal light is available; infrared simultaneously reveals areas in complete darkness
- AI people & vehicle detection via motion or tripwire/intrusion rules
- AI people counting / flow control (supported by standard NVRs)
- Face Capture for up to 16CH face recognition with AI NVR\*
- 50m infrared illumination and customisable white LED light
- White LED light can be customised for always-on or on-trigger
- Stream up to 4.0MP@25fps with fixed lens 2.8mm (97°)
- Built-in microphone and loudspeaker for two-way talking
- Extended Power Over Ethernet up to 800m cable run (@10Mbps)
- Alarm input/output, microSD slot, H.265+, IP67 weather rated

VSIPU-4DIRG-IM  
(4.0MP Dual Lens Turret)

**Contact RhinoCo for trade pricing**







Professional IP Solutions

# The best in perimeter protection with the Thermal Series



Dual Lens Technology



Thermal Technology



AI People & Vehicle Detection



4.0 MEGAPIXEL



WARRANTY  
4 YEARS  
WARRANTY



Thermal sensor detects human/vehicles even when obscured



## Hybrid Thermal Series Bullet & Turret Domes

- Thermal Series combines visible light & thermal imaging
- Features siren & white LED strobe for thermal event alerts
- Thermal intruder detection; fire and smoking detection
- Hybrid vision modes for thermal image information overlay
- 4.0MP visible light sensor with 4mm lens (71° view angle)
- Stream up to 4.0MP (2336 x 1752) at 25fps, 0.05lx low light
- 30m infrared range, microSD slot, alarm & audio interface
- Uncooled VOx thermal (256 x 192), 8~14µm wavelength
- 3.5mm fixed lens for thermal camera (50° view angle)
- Two-channels used for thermal and visible light channels
- Adjustable modes & alarm output for fire detection
- IP67 rated full-metal housing, power by PoE/12VDC

VS IPTC-4DIRG (4.0MP Thermal Turret)

VS IPTC-4BIRG (4.0MP Thermal Bullet)

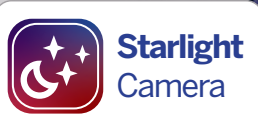


Thermal detects events where visible light cannot



Professional IP Solutions

# Professional AI and PTZ features in a compact dome

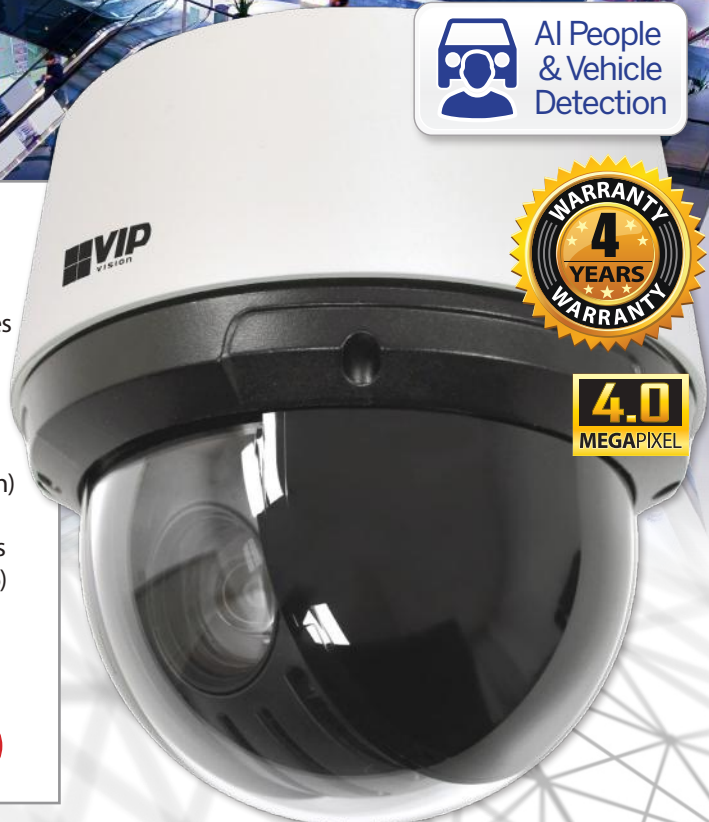


## Pro AI Series 4.0MP Compact PTZ Dome

- Only Ø168 x 171mm; discreet size PTZ with great features
- Ideal for where larger sized PTZ would be undesirable
- 25x optical zoom, endless 360° panning and -5°~90° tilt
- Stream up to 4.0MP at 25fps, 5~125mm lens (53~3.3°)
- 6 x infrared illuminators for 100m maximum distance
- AI people & vehicle detection (motion; tripwire/intrusion)
- AI PTZ auto tracking detects and tracks people only
- Search playback by person and vehicle detection events
- Starlight performance in low-light (colour 0.005lx @ F1.6)
- 1/1 audio and 2/1 alarm interfaces (input/output)
- MicroSD slot, H.265+, true WDR (120dB), IP66 & IK10
- Metal backing plate for install; no back box required

VSIPTZ-4IRC-I  
(4.0MP, 25x Zoom)

[Sign up for trade pricing](#)



# Recessed PTZ speed dome now with AI

High speed, 32x lossless zoom and 50fps - ideal in gaming, banking & more

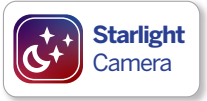


## Pro AI Series 2.0MP Recessed PTZ Dome

- 32x optical zoom, endless 360° panning and 0°~90° tilt
- Ultra fast 500°/s preset pan and tilt speed (350°/s manual)
- Stream up to 2.0MP at 50fps, 4.9~156mm lens (63~2.2°)
- AI face capture for use with face recognition AI NVRs
- AI people & vehicle detection (motion; tripwire/intrusion)
- Trigger alerts and PTZ auto-tracking using AI detection
- 1/1 audio and 2/1 alarm interfaces (input/output)
- MicroSD slot, H.265+, true WDR (120dB), IK10 rated

VSIPTZ-2C-I  
(2.0MP, 32x Zoom)

[Sign up for trade pricing](#)





# Updated Pro AI Series PTZ with superior performance



## Pro AI Series PTZ Dome Cameras

- 25x and 32x optical zoom, endless 360° panning, -15°~90° tilt
- AI people & vehicle detection (tripwire and intrusion rules)
- Search playback by person and vehicle detection events
- AI PTZ auto tracking detects and tracks people & vehicles
- Stream up to 8.0MP at 25fps (4.0MP@25fps, 2.0MP@50fps)
- Starlight performance in low-light (colour 0.005lx@F1.35)
- LED infrared illumination system up to 150m IR distance
- 1/1 audio interface and 2/1 alarm interface (input/output)
- MicroSD slot, H.265+, true WDR (120dB), IP67 weather rated
- Incl. bracket for wall mount; ceiling drop mount sold separately



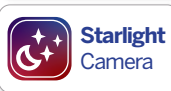
- AI Auto Tracking
- Starlight Camera
- AI People & Vehicle Detection



- Full HD 1080
- 4.0 MEGAPIXEL
- 4K ULTRA HD

- VSIPPTZ-2IRP-I2 (2.0MP, 25x Zoom)
- VSIPPTZ-4IRP-I2 (4.0MP, 32x Zoom)
- VSIPPTZ-8IRP-I2 (8.0MP, 25x Zoom)

[Sign up for trade pricing](#)



## Pro AI Series 2.0MP Positioning Camera

- Endless 360° pan -90° ~ +90° tilt
- Stream Full HD 2.0MP@50fps
- 4.8 ~ 120mm lens (59.2~2.4°)
- Starlight; min. illumination 0.005lx,
- 150m distance LED infrared
- AI human/vehicle detection via motion & tripwire/intrusion rules
- AI auto tracking people & vehicles
- True WDR, audio/alarm I/O, IP67
- Junction box included, wall mount sold separately (VSBKTB730W)



- VSIPPTZ-2IRW-I2 (2.0MP PTZ)
- VSBKTB730W (Wall mount)



## Pro AI Series 4.0MP Mini PTZ Dome

- 4.0MP@25fps; 2.8 ~ 12mm varifocal lens (97~32°)
- 4x optical zoom, 355° pan and 5° ~ +90° tilt adjust.
- AI people & vehicle detection (motion & IVS rules)
- Starlight; min. illumination colour at 0.005lx
- 20m LED infrared , true WDR, audio I/O, PoE+
- MicroSD slot for edge recording up to 512GB
- IK08/IP66 rated housing, only Ø128mm x 65mm

- VSIPPTZ-4IRM-I2 (4.0MP PTZ)

[Sign up for trade pricing](#)



Professional IP Solutions

# The ultimate AI PTZ for enterprise applications



AI Auto Tracking



Starlight Camera



AI People & Vehicle Detection



Face Recognition



## Ultimate AI Series 8.0MP 40x Zoom PTZ Dome

- Stream 8.0MP 4K Ultra HD (3840 x 2160) at 25fps
- 40x optical zoom, endless 360° panning, -30°~90° tilt
- Long range LED infrared up to 500m IR distance
- Starlight low light colour performance at 0.005lx@F1.35
- AI face capture & face recognition performed in-camera
- AI people & vehicle detection (motion; tripwire/intrusion)
- Search playback by person and vehicle detection events
- AI auto tracking detects and tracks people and vehicles
- Optical defogging and auto-sensing smart IR/lens wiper
- 1/1 audio, 2/1 alarm, 1 x RS485 and BNC analogue output
- MicroSD slot, H.265+, true WDR (120dB), IP67 weather rated
- Powered via Hi-PoE or included 36VDC power supply

VSIPTZ-8IRU-12  
(8.0MP, 40x Zoom)

[Sign up for trade pricing](#)

## See AI PTZ Auto Tracking in action

Scan code to watch our video







Professional IP Solutions

# Superb licence plate recognition for your next project



AI Detection  
Plate Snapshots  
Email Reporting

**4.0**  
MEGAPIXEL



## Traffic Series Varifocal AI ANPR Bullet Cameras

- Capture number plates for vehicles going up to 80km/h\*
- Stream up to 4.0MP@25fps; superb low light at 0.002lx
- In 2.7 ~ 12mm lens (standard) or 8~32mm lens (long-range)
- 4 x infrared illuminators; in ANPR detection/video monitoring: 10m/30m (-I3 model), 30m/60m (-I3-Z model)
- Highlight compensation dampens headlight glare at night
- Edge enhancement for number plate detail and legibility
- White/blacklist control; automatically open gates via ANPR
- Export and share vehicle access reports via .CSV and email
- Red & blue flashing lights & siren for intrusion, loitering detection
- External alarm I/O and RCA audio output support
- IP67 weather rated housing; includes junction box

VSIPNP-4BIRM-I3 (2.7~12mm, 4.0MP)  
VSIPNP-4BIRM-I3-Z (8~32mm, 4.0MP)

**Sign up for trade pricing**



We can assist with your next ANPR CCTV project



# ENSA™

Solar LED Lighting

## Power & Illuminate Your Next Install with ENSA™



## ENSA™

### Solar Powered Lighting & Battery Systems

- Solar systems to power your next installation
- Pre-configured & ready for implementation
- Use for lighting, CCTV, WiFi, access & more
- High conversion rate monocrystalline panels
- Large capacity lithium batteries (LiFePO4)
- Fully adjustable LED lighting modules
- 180lm/W with microwave motion sensor
- Set parameters with included remote
- Optional bird spike strip included
- Ø50~60mm diameter pole mount



Configure Use  
with Included  
Remote



\*Pole/base not included with SSL-B units, sold separately

#### 56W Solar System

- 56W Monocrystalline Panel
- 218Wh LiFePO4 Battery
- 20W 180lm/W Area Light
- 145 x 75° Beam Angle
- 12.8VDC Output Voltage

SSL-B20MC

#### 80W Solar System

- 80W Monocrystalline Panel
- 320Wh LiFePO4 Battery
- 30W 180lm/W Area Light
- 145 x 75° Beam Angle
- 12.8VDC Output Voltage

SSL-B30MC

#### 120W Solar System

- 120W Monocrystalline Panel
- 500Wh LiFePO4 Battery
- 50W 180lm/W Area Light
- 145 x 100° Beam Angle
- 12.8VDC Output Voltage

SSL-B50MC

#### 180W Solar System

- 180W Monocrystalline Panel
- 1200Wh LiFePO4 Battery
- 60W 180lm/W Area Light
- 145 x 100° Beam Angle
- 25.6VDC Output Voltage

SSL-B60MC

Sign up for trade pricing





Professional IP Solutions

# Professional AI Solar CCTV with 24/7 Recording



Solutions for high power or multiple cameras

Complete site coverage with variety of models



Add Cameras to Private Power Poles, Sheds, etc.



## Solar Powered CCTV Surveillance

- 120W & 180W Solar Systems + AI surveillance
- Fully configured and ready for installation
- Remote view via 4G\* or 5GHz wireless links
- 4.0MP IR PTZ included, other options available\*
- Surveillance grade microSD storage included
- 500Wh or 1200Wh high capacity batteries

\*SIM sold separately, camera changes may increase cost. Built pole & base delivery dependent on area, contact your sales rep for details.

SLR-B120-4G/4W (120W Panel, 4G/WiFi)      SLR-B180-4G/4W (180W Panel, 4G/WiFi)

[Sign up for trade pricing](#)



## 12VDC Private Pole 4G Surveillance Kit

- Add cameras to private poles with our preconfigured kit
- Standard 4.0MP Mini PTZ with infrared or choose from our wide range of IP cameras (180° dome shown above)
- Surveillance grade microSD and industrial 4G router
- 12VDC 5A power supply, 10m lead, full pole mount kit

VSI PKIT-P4G (Private Pole CCTV Kit)

[Sign up for trade pricing](#)

# ENSA™

LED Lighting Accessories

## Heavy duty poles for street lighting and solar surveillance

Ready for use with our SLR-B and SSL-B Series

ENSA™  VIP VISION

### Heavy Duty Octagonal Hinged Poles

- 4.0m & 6.0m octagonal galvanised steel hinged poles
- Street lights, CCTV surveillance and solar systems
- Ø60mm top diameter for light or panel mounting
- Access panel at pole base for easy maintenance
- Concrete base with forklift mounts optionally available

#### 4m Hinged Octagonal Pole

- Hinge height 1840mm, pole weight 92kg
- 282 x 282mm bolt template, 4 x M20 1000mm J-bolts

#### 6m Hinged Octagonal Pole

- Hinge height 3450mm, pole weight 131kg
- 350 x 350mm bolt template, 4 x M24 1000mm J-bolts

SLR-POL4-2  
(4m Hinged Pole)

SLR-POL6-2  
(6m Hinged Pole)

SLR-POLCONC1  
(580kg Base for 4m)

SLR-POLCONC2  
(815kg Base for 6m)

[Sign up for trade pricing](#)



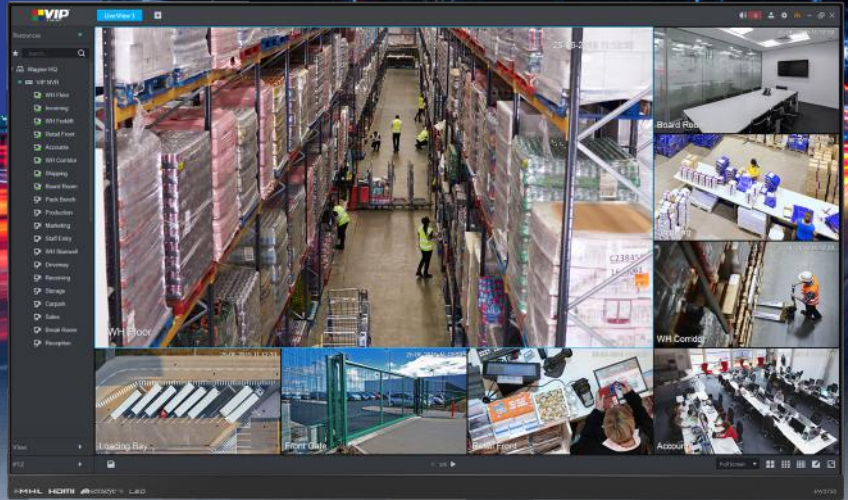




Professional IP Solutions

# Centrally managed systems with VIP Vision and DSS

*Includes 256 Video Channel Licences*



## VIP Vision Security Management Centre

- DSS GUI makes large system management simple
- Centralised CCTV, access control & intercom management
- Set different access rights hierarchies per user/group
- Pre-activated 256 video channels, cost effective licensing
- Manage building access w/ RFID tag & fingerprint scan
- Event & alarm logging, searching, timestamp & overlay
- Create impressive live video walls displays
- Intelligent functions + ANPR, AI & face recognition
- PTZ control/tour, fisheye dewarp, audio, alarm, etc.
- Manual and automatic system backup/restore
- Built-in 1TB HDD - supports 3x 2.5" HDDs for storage
- High reliability with hot standby & hot swapping HDDs



## Manage combined systems:

UP TO **256** VIDEO CHANNELS    UP TO **1000** INTERCOM DEVICES    UP TO **64** CONTROLLED DOORS

NVR-SMC1  
(1RU size)

*Sign up for trade pricing*

\*Surveillance grade monitors sold separately to NVR-SMC1



# AVOL

Professional Electrical Supplies

## AVOL Genius Solar and Battery Energy Storage Solutions



Hybrid inverter integrates with existing solar systems



Batteries



Panels



### Genius On/Off-grid Battery Storage System

- 5kW Hybrid Inverter with LFP Battery
- Expand up to 20kWh battery storage
- Retrofit to existing solar power system
- Connect up to 4 battery modules
- Mobile app - access anytime, anywhere
- Peak load shifting
- Battery priority
- Easy set-up and install
- AC/DC surge protection
- IP65 weather rated



### 440W Tiger Neo Satin N-Type Solar Panels

- All-black 420-440W panel units
- N-type monocrystalline cells
- Up to 16 panels at 7kW in a single kit
- Includes all hardware and connectors
- Anodized alu. frame & mounting rails
- Maximum voltage: 32.99V
- Maximum current: 13.34A
- Module efficiency: 22%
- Comes with mounting kit
- SMBB & HOT2.0 Technology





# Deliver battery storage and panels to Australians



Up to 20kWh battery storage



Premium CATL battery cells



Durable & robust solar panels



Easy monitoring with phone app



Streamline modular design



New or retrofit with existing PV system

Find out more about AVOL Genius:



## AVOL Genius Solar Power and Battery Kits

- AVOL 5kW Hybrid inverter with 5kWh modular LFP battery modules
- JinkoSolar 440W all-black monocrystalline solar panels
- Full set of install components incl. rails, cable, MC4 connector, etc.
- Mobile app monitoring of power generation, usage and grid feed-in

PWRSLR-J3P5B (3.5kW Panels, 5kWh Battery Kit)

PWRSLR-J7P5B (7kW Panels, 5kWh Battery Kit)

PWRSLR-J7P10B (7kW Panels, 10kWh Battery Kit)

PWRSLR-J7P15B (7kW Panels, 15kWh Battery Kit)

PWRSLR-J7P20B (7kW Panels, 20kWh Battery Kit)



Our kits include panel rails, end clamps, grounding lugs, earth/solar cable, isolator switch, MC4 connectors, PV/ES labelling and your choice of tile/tin roof mounts



## Genius Battery Kits

- 5Wh LiFePO4 Battery
- 5kW Hybrid Inverter
- Add AVOL battery storage to existing solar installations; keep your existing system in tact, use as AC coupled battery storage inverter system
- Power & communication connection cables incl.

AVOL-GENIUS5 (5kWh)

AVOL-GENIUS10 (10kWh)

AVOL-GENIUS15 (15kWh)

AVOL-GENIUS20 (20kWh)



## Genius Solar Power Kits

- AVOL inverter & panel kits
- AVOL 5kW hybrid inverter
- 440W Tiger Neo solar panels
- N-type monocrystalline cells
- Mounting rails and accessories for tin and tile roofs included
- Necessary cables and hardware included
- Durable against salt, wind, and other environmental factors

PWRSLR-J3P (3.5kW) PWRSLR-J7P (7kW)



[Sign up for trade pricing](#)

Professional HDCVI Surveillance

# Upgrade existing coax installs to AI with Securview



## Compact Series AI HDCVI DVRs

## Pro Series AI HDCVI DVRs

- Face recognition up to 2 channels (via BNC only)
- AI person/vehicle detection via IVS (2CH) & SMD (8CH)
- Records 8.0MP@7fps, 5.0MP@12fps and 2.0MP@25fps
- Supports HDCVI, HDTV, AHD, Analogue & IP inputs
- H.265 compression, HDMI/VGA, remote view

- Face recognition up to 2 channels (via BNC only)
- AI person/vehicle detection via IVS (2CH) & SMD (8CH)
- Records 8.0MP@7fps, 5.0MP@12fps and 2.0MP@25fps
- Supports HDCVI, HDTV, AHD, Analogue & IP inputs
- Up to 2 x HDD bays (20TB total), H.265, alarm I/O

**CVR8COM3**  
(8CH, 1 HDD)

**CVR16COM3**  
(16CH, 1 HDD)

**Sign up for trade pricing**

**CVR8PRO5**  
(8CH, 2 HDD)

**CVR16PRO5**  
(16CH, 2 HDD)



## Pro 2.0MP Fixed Lens HDCVI Cameras

## Pro 2.0MP Motorised VF HDCVI Cameras

- 2.0MP, 2.8mm lens (109°), 30m infrared illumination
- 0.001lx colour, true WDR, HDCVI/AHD/TVI/SD switchable
- Built-in microphone, 12VDC, IP67 weather rated

- 2.0MP, 2.7~13.5mm (108° ~ 30°), up to 80m infrared
- 0.001lx colour, true WDR, HDCVI/AHD/TVI/SD switchable
- Built-in microphone, 12VDC/24VAC, IP67 (IK10 dome)

**VSCVI-2DIRG (Turret)**  
**VSCVI-2BIRG (Bullet)**

**Sign up for trade pricing**

**VSCVI-2DIRMD (Dome)**  
**VSCVI-2BIRMG (Bullet)**

**Sign up for trade pricing**



# Cameras support dual power & interface with all coax DVRs



## Pro 5.0MP Fixed Lens HDCVI Cameras

- 5.0MP, 2.8mm lens (111°), up to 30m infrared
- 0.001lx colour, true WDR, HDCVI/AHD/TVI/SD
- Audio I/O, 12VDC, IP67 (IK10 dome)

VSCVI-5BIRG2 (Bullet)    VSCVI-5DIR2.8D (Dome)    VSCVI-5DIRG2 (Turret)

[Sign up for trade pricing](#)



5.0 MEGAPIXEL



## Pro 5.0MP Motorised VF HDCVI Cameras

- 5.0MP, 2.7~13.5mm (113°~31°), up to 80m IR
- 0.001lx colour, true WDR, HDCVI/AHD/TVI/SD
- Audio I/O, 12VDC/24VAC, IP67 (IK10 dome)

VSCVI-5BIRMG2 (Bullet)    VSCVI-5DIRMD (Dome)    VSCVI-5DIRMG2 (Turret)

[Sign up for trade pricing](#)



5.0 MEGAPIXEL



## Pro Series 8.0MP HDCVI Cameras

- 8.0MP, 2.8mm (111°), 3.7~11mm (112~46°)
- Huge 1/2" sensor, ultra low light 0.005lx
- True WDR (120dB), 2D/3D DNR, (PIR detect)
- HDCVI/AHD/TVI/SD switchable, IP67, 12VDC

VSCVI-8BIRG (Bullet)    VSCVI-8BIRP (PIR Bullet)    VSCVI-8DIRMG (VF Turret)

[Sign up for trade pricing](#)



4K ULTRA HD



## Ultimate Series 8.0MP HDCVI Cameras

- 8.0MP, 3.7 ~ 11mm (112°~46°), auto iris
- 0.005lx, 50m/100m IR (dome/bullet), true WDR
- Audio/alarm I/O, HDCVI/SD, 12VDC/24VAC
- On-camera zoom adjustment, IP67 (IK10 dome)

VSCVI8MPFBIRM (Bullet)    VSCVI8MPVDIRM (Dome)

[Sign up for trade pricing](#)



4K ULTRA HD



Professional IP Solutions

# Secure your CCTV and alarm installs with SECCAB



*Fits up to  
2RU Sized  
NVR*



*\*Monitor & NVR sold separately*



## SECCAB: The all-in-one vertical security cabinet for CCTV & alarms installations

- Lockable wall mounted storage of CCTV & alarm systems
- Fit up to 24" monitor, with 50/75/100 VESA mounts\*
- Capacity: 2RU, 240~480mm width, 465mm depth
- Integrated 4 x outlet powerboard & 2 x cabinet locks
- Cable management knockouts from all cabinet sides
- SPCC steel construction and white powder coating
- Suits vertical port input monitors (HDMI adapter available)
- USB fans included

SECCAB  
(2RU Cabinet)

[Sign up for trade pricing](#)



# FLASHVIEW™

Visual Sensation Delivered

## Professional CCTV grade monitors and accessories

VESA Mounts  
2 x 1.5W Speakers  
Vertical Inputs



### FLASHVIEW™ Full HD CCTV Monitors

- Full HD 1080p (1920 x 1080)
- Made for 24/7 CCTV operation
- 1 x HDMI and 1 x VGA inputs
- VESA 75 (22") / 100 (24") mounts
- Vertical power/display inputs

LCDFL22G2  
(22" 1080p)

LCDFL24G2  
(24" 1080p)



### FLASHVIEW™ 2-way 4K HDMI Splitter

- 1 x HDMI input, 2 x HDMI output
- Supports up to 4K Ultra HD & 3D
- Easy plug-and-play installation
- Includes 5VDC power supply

HDMI-SPL2P3  
(HDMI Splitter)



### FLASHVIEW™ HDMI Extender Over CAT6

- Transmit HDMI via CAT6 up to 50m
- Supports up to Full HD 1080p & 3D
- Up to 225MHz/2.5Gbps bandwidth
- Incl. 2 x 5VDC 1A PSUs

HDMI-EXT50M  
(HDMI over CAT6)

[Sign up for trade pricing](#)

### FLASHVIEW™ 4K Copper/Fibre HDMI Cables

- 4K@60Hz, 18Gbps; also in easy-install cables



- HDMI-1C (1m)
- HDMI-2C (2m)
- HDMI-5C (5m)
- HDMI-10C (10m)
- HDMI-10F (Fibre, 10m)
- HDMI-20F (Fibre, 20m)



- HDMI-10FC (Fibre, 10m)
- HDMI-20FC (Fibre, 20m)
- HDMI-30FC (Fibre, 30m)
- HDMI-50FC (Fibre, 50m)

### Wall and Ceiling Monitor Brackets



- LCDBKT-A15T (13~30" Wall Mount)
- LCDBKT-A30TS2 (17~42" Tilt & Swivel Wall Mount)
- LCDBKT-A50T2 (37-70" Television Wall Mount)
- LCDBKT-A35C (23 - 42" Tilt & Swivel Ceiling Mount)



Professional IP Solutions

# Make every install look great with our compact cabinets



4U/6U 300  
Depth and  
6U/9U 250  
Depth



### 19" Data Cabinets 300mm Depth

- 19" width, 4U/6U models, 300mm total depth
- Easy installation wall-mount bracket system
- Tempered swing glass door with cabinet lock
- Quick-removable cabinet side panels
- Includes earthing cable and cage nuts/washers
- Ventilation fan and power rail unit included
- Welded frame with powder coated finish
- Assembled for convenience & quick install

**RMC-B4U300W**  
(19", 4RU, fan, PDU)

**RMC-B6U300W**  
(19", 6RU, fan, PDU)



### 10" Comms Cabinets 250mm Depth

- 10" width, 6U/9U models, 250mm total depth
- Easy installation wall-mount bracket system
- Includes pre-fitted 135mm rackmount shelf
- Tempered swing glass door with cabinet lock
- Quick-removable cabinet side panels
- Includes earthing cable and cage nuts/washers
- Welded frame with powder coated finish
- Assembled for convenience & quick install

**RMC-B6U250W**  
(10", 6RU, shelf)

**RMC-B9U250W**  
(10", 9RU, shelf)

[Sign up for trade pricing](#)

[Sign up for trade pricing](#)



# Deliver a great result & save time on your next installation



## 19" Rackmount Data Cabinets

- Available in wall & floor mount designs
- 4RU to 18RU; 450mm or 600mm depths
- Lockable, 5mm tempered glass door, fixed shelf incl.\*
- Removable side panel; holes for cable management

### Pre-assembled Wall Mount Cabinets:

- RMC-B4U450W2 (4RU 450mm)
- RMC-B6U450W2 (6RU 450mm)
- RMC-B6U600W2 (6RU 600mm)
- RMC-B12U450W2 (12RU 450mm)
- RMC-B12U600W2 (12RU 600mm)
- RMC-B18U450W2 (18RU 450mm)
- RMC-B18U600W2 (18RU 600mm)



Cabinets available up to 47RU size

\*Fixed shelves included in some cabinets only

**Need a bigger cabinet? Just ask your sales rep!** We also stock patch panels, blank panels, power strips, fans, cable management and more.



### Cantilever / Rack Shelves:

- RMC-BS250 (250mm)
- RMC-BS350 (350mm)
- RMC-BS450 (450mm)



### Power Rail & 24 Port Patch Panels:

- RMC-PB8 (8 Port Power Rail)
- RMC-PP24-5-T (CAT5 Patch Panel)
- RMC-PP24-6-T (CAT6 Patch Panel)



### Fans & Cable Managers:

- RMC-CM1 (Facia Style)
- RMC-CM2 (Clips Style)
- RMC-FN2P-T (Fan 2-Pack)



## VIP Vision MicroSD Cards

- Perfect for ANR & edge recording
- Available in 32, 64, 128 & 256GB
- UHS-I class 10 microSDHC
- 80MB/s read, 10MB/s write

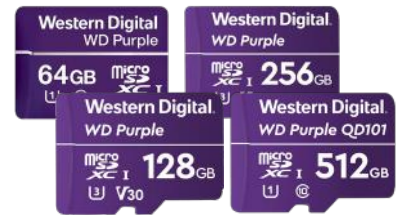
- VIPSD32GB: VIPSD128GB:
- VIPSD64GB: VIPSD256GB:



## Seagate SkyHawk HDDs

- Surveillance grade built for 24/7 use
- Available in capacities up to 20TB
- Up to 550TB/year workload rating
- 1.5M hrs MTBF, 3 year warranty

Ask us about our best deals on Skyhawk HDDs



## Western Digital

## Surveillance MicroSD Cards

- Built for continuous data writing
- Ideal for edge recording applications
- Available in capacities up to 1TB
- Can be rewritten over 1000 times

Ask us about our best deals on WD microSD cards



Professional IP Solutions

# Build impressive video walls using up to 9 displays



Add up to 9 displays to support large CCTV installs



**NVD-A6** (6x HDMI)  
**NVD-A9** (9x HDMI)

*Sign up for trade pricing*



## Network Video Decoders

- Network-roaming decoder displays all video feeds
- Video wall splicing for up to 36 channels per monitor
- Split screen control with zoom/merge/roam/overlay
- Support for audio, alarm, two-way talk, RS232, RS485
- Fisheye dewarp & multi-video split display
- Manage via web browser or VIP Vision™ SmartPSS
- **NVD-A6:** Decode 8CH 4K / 32CH 1080p / 128CH D1
- **NVD-A9:** Decode 12CH 4K / 48CH 1080p / 144CH D1



## Pro Network PTZ Keyboard

- RS232, RS485, USB, RJ45 connection **VSIPPTZKBV2**
- Control PTZ and NVR/DVRs
- Joystick, 3.2" LCD, presets keyboard



## SECURVIEW

### LED Infrared Illuminators

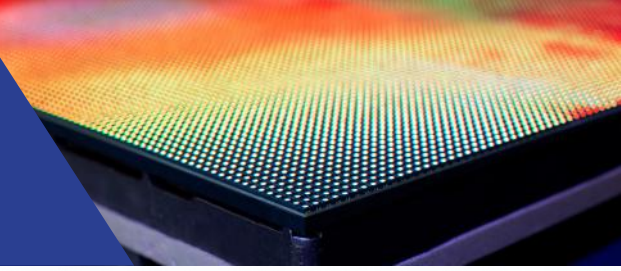
- Flood light style illuminators, IP66 rated
- Models with beam angle & range:
  - 11W: 30° (90m) / 60° (50m) / 120° (20m)
  - 28W: 30° (170m) / 60° (100m) / 120° (50m)
  - 60W: 30° (280m) / 60° (150m) / 120° (75m)

All wattages  
in 30/60/120°: **VSIR11W VSIR28W VSIR60W**





# Deliver a great result & save time on your next installation



## Passive HDCVI Baluns

- Coax video signal over UTP
- Supports HDCVI/TVI/AHD signals
- 250m/400m range (1080p/720p)
- Supports CAT5/5e/CAT6 UTP



VSBALHDP  
(Balun pair)

VSBALHDP4  
(4 Port)

VSBALHDP8  
(8 Port)



## Ethernet over Coax Extenders

- Data/Power (via PoE switch) over coax
- 400m@100Mbps, 1000m@10Mbps\*
- Combine converter pair and transmitter/receiver; (\*RG59 coax)



Extend  
Up to  
1000m

VSEOC-ATX  
(Transmitter)

VSEOCPAIRV2  
(Converter Pair)

VSEOC-ARX  
(Receiver)

**Sign up for trade pricing**



## HDCVI Output Controller

- Switch compatible cameras between coax technologies without HDCVI DVR or tester
- Plug & play operation
- Switch between HDCVI, HDTVI, AHD & analogue
- Use with cameras with switchable video output
- 2 x AAA batteries included



Easy  
In-line  
Use

VSSELECT101



## HDCVI Video Isolator

- Solve image interference caused by ground loops
- 75Ω BNC male to female
- 100MΩ insulation resistance
- 800V isolation voltage
- 600V ESD contact discharge
- 4KV 10/700us surge protection
- 400mm cable length



VSGLI



## High Fidelity CCTV Microphones

- 12VDC microphones for use with CCTV cameras
- Up to 150m<sup>2</sup> pickup range omni-directional
- Digital noise reduction and voice enhancement
- Available in plastic or aluminium alloy housing



VSAMICA2 (Plastic)  
VSAMICB2 (Metal)

**Sign up for trade pricing**



## CCTV & Alarm Warning Signs

- Quality corflute signs & stickers for visual deterrence
- Available in A3 (sign only) and A4 sizes
- VSCDSCS: Small stickers 100 x 130mm size

### Corflute Portrait Signs:

VSA24 (A4 size)  
VSA24A3 (A3 size)

### Warning Landscape Stickers:

VSCDSC (4 x A4 CCTV)  
VSCDSA (4 x A4 alarm)  
VSCDSCS (4 x Small CCTV)



# SECURVIEW

Professional Vehicle Surveillance

## New Hybrid HDCVI Mobile DVRs for Vehicle CCTV

Full HD  
1080



Supports  
HDCVI and  
analogue  
cameras



### Professional Mobile Surveillance with GPS, 4G and WiFi

- Robust chassis mobile HDCVI DVRs with included GPS, 4G and WiFi modules
- Supports HDCVI (and TVI, AHD) and analogue cameras via 4-pin M12 aviation connectors
- Mobile PoE switch & cables required for up to 4 channels IP camera support, sold separately
- 4G modem for remote view (SIM sold separately) and 2.4GHz WiFi module for remote access
- Precision GPS (GPS/GLONASS) module with GPS coordinates overlay, includes external antenna



### 4CH Mobile Series HDCVI DVR

- Records 4 x HDCVI/analogue channels at 2.0MP@25fps
- 1 x 2.5" SATA HDD/SSD bay & 256GB SD card storage
- VGA (M16, 10-pin) & composite (M12, 4-pin) display out
- 6~36VDC, audio, alarm, RS485 and RS232 inputs
- Single DIN, vibration-dampening chassis



### 8CH Mobile Series HDCVI DVR

- Records 8 x HDCVI/analogue channels at 2.0MP@25fps
- 2 x 2.5" SATA HDD/SSD bay & 256GB SD card storage
- VGA (M16, 10-pin) & composite (M12, 4-pin) display out
- 6~36VDC, audio, alarm, RS485 and RS232 inputs
- Single DIN, vibration-dampening chassis

#### Mobile DVRs

MXVR-GPS4GW (4CH, 1HDD)  
MXVR-GPS8GW (8CH, 2HDD)

#### M12 Camera Leads

MCVR-CABLE3M (3m)  
MCVR-CABLE6M (6m)

MCVR-CABLE12M (12m)

MCVR-CABLE18M (18m)

MCVR-VGACABLE3M (0.3m, VGA)

[Sign up for trade pricing](#)



# Securview mobile CCTV for your next vehicle installation



Full HD  
1080

SECURVIEW  
VICTORY SERIES

## Mini Dome Camera

- Stream 2.0MP (1920x1080)
- 2.8mm lens (H: 101° view)
- Built-in mic & 20m infrared
- IP67 rated metal body
- Auto day/night (IR cut filter)
- Heavy duty M12 connector

VSCVIM-2DIR  
(Mini Dome)



Full HD  
1080

SECURVIEW  
VICTORY SERIES

## Bumper Camera

- Stream 2.0MP (1920x1080)
- 2.8mm lens (H: 106° view)
- Built-in mic & 20m infrared
- IP67 rated metal body
- Auto day/night (IR cut filter)
- Heavy duty M12 connector

VSCVIM-2CIR  
(Bumper)



Full HD  
1080

SECURVIEW  
VICTORY SERIES

## Twin Dash Camera

- Stream 2.0MP@25fps
- **Rear:** 2.1mm (164° view)
- **Front:** 2.8mm (127° view)
- Built-in mic & 3m infrared
- Auto day/night (electronic)
- Adhesive adjustable mount

VSCVIM-2TT  
(Dash Cam)



Full HD  
1080

SECURVIEW  
VICTORY SERIES

## Bumper Bullet

- Stream 2.0MP (1920x1080)
- 2.8mm lens (H: 106° view)
- Built-in mic & 20m infrared
- IP67 rated metal body
- Auto day/night (IR cut filter)
- Heavy duty M12 connector

VSCVIM-2BT  
(Bumper Bullet)



7SD3

Wide input support for mobile or desktop devices



10FHD



10SD3

SECURVIEW

## 7" and 10" LCD Vehicle Monitors

- Avail in 7" and 10" models
- 12VDC input, incl. brackets
- HDMI / VGA / AV / BNC\* (\*excludes LCD7SD3)

LCD7SD3 (7" 480p)

LCD10SD3 (10" 720p)

LCD10FHD (10" 1080p)



SECURVIEW  
VICTORY SERIES

## Mobile Wedge Dome

- 2.0MP@25fps, 2.8mm (111°)
- 20m IR, 0.005lx low light
- Auto day/night (IR cut)
- IP67 / IK10, M12 connector
- Optional shield bracket



Full HD  
1080

VSCVI2MPVDIRFTV3  
(Vandal Dome)

VSBKTA201W (Shield)



## 2TB Capacity 2.5" SSD for Mobile DVRs

- 2.5" suits DVRs
- 6GB/s SATA
- 720TBW endurance
- 540MB/s, 500MB/s read/write



SSD2TB2.5  
(2TB)



Professional Vehicle Security

# Wide range of mobile safety and security for vehicle installs



Auto-Arm  
2-point Cut  
Valet Mode



## Advanced Car Alarm & Immobiliser

- Top quality Australian Standards Approved car alarm
- Door, bonnet and boot protection
- Integrated central locking relays, keyless entry
- 1 x AU standards approved 3-point immobiliser
- 2 x Water resistant rolling code keyfobs
- 1 x Mini coded backup battery siren
- 1 x Intelligent glass break sensor

RAV3



## Two-point Keypad Immobiliser

- 70% of vehicle thefts are due to stolen keys
- Code must be entered before ignition
- 3min lock after 3 incorrect attempts
- Vehicle protection against key theft
- Automatic arm; less disruption to normal use
- High security all-black wiring harness
- Valet mode: temporary auto arming bypass

IM007



## Heavy Duty Central Locking Kits & Door Motors

- Superior quality central locking kits, in 2 door and 4 door kits
- High torque motors ideal for use with rigid door locking mechanisms
- Individual door locking motors & cable lock adapters available

CLKHD (4-door kit)    CLKHD2D (2-door kit)    DLHD101 (Master motor)    DLHD102 (Slave motor)    CLKHDCABLE (Lock adapter)



[Sign up for trade pricing](#)



# Mobile safety, GPS tracking, vehicle cameras & accessories



## 4G GPS Vehicle Tracker

- GPS and 4G\* / GSM antennas
- for 11 ~ 36VDC vehicles
- Real-time speed & location tracking
- <200g lightweight, 105 x 65mm
- Online platform management including historical reports, visit [www.rhinotracks.com.au](http://www.rhinotracks.com.au)



**RHINOTRACKS-ST5**  
(\*SIM not incl.)

Full HD  
1080



**Rhino**

## 1080p Dash Cam (16GB)

- 3" LCD, 1080p camera with WDR
- LED light, time/date/number plate footage overlay, incl. mount bracket, charge cables, 16GB microSD

**MDVR-HDV7**



**Rhino**

## 2.4GHz Reverse Kit

- Connects in seconds,
- 12m transmission distance
- 7" LCD, 2 AV channels
- 420TVL 2.8mm lens (120°)
- 30m infrared, IP67 rated
- 12V/24VDC, incl. remote

**MSKIT-WRC**



**Rhino**

## Reversing Sensor Kit

- Four sensor reverse kit
- 40KHz ultrasonic sensors
- 2.5m detect distance
- Includes siren, sensors, control box and hole saw
- 12VDC 20~200mA

**MSKIT-RV4**



**Rhino**

## 4.3"/7.0" LCD Monitors

- 4.3" (flip up display) & 7.0" (incl. stand), 480 x 234 (16:9)
- Triggered on reverse
- 2/4 video inputs (4.3"/7.0")
- Includes mounting kits
- 12VDC power input

**MSMON-4 (4.3")**  
**MSMON-7 (7.0")**



**Rhino**

## Relays & Pin Switches

- 40A, 12VDC, 5 pin relay
- PINSW: metal pin switch, 5 x 65mm, screw adjust
- 409: 35x53mm straight
- 410: 45x60mm right angle

**40ARELAY (Relay)**  
**PINSW (Metal)**  
**PIN409 (Straight)**  
**PIN410 (Right angle)**

## **Rhino** Vehicle safety and reversing assist cameras



Bracket/flush (18mm), 400TVL, IP67

**MSCAM-B18**

Flush (18mm), 420TVL, 5m IR, IP67

**MSCAM-FI18**

Bracket (28mm), 420TVL, 5m IR, IP67

**MSCAM-BI28**

Screw mount (28mm), 420TVL, IP67

**MSCAM-S28**

Number Plate camera, 420TVL, 5m IR, IP67

**MSCAM-NPI**

Bumper mount, 420TVL, 5m IR, IP68

**MSCAM-TI**

Mini dome mount, 420TVL, 5m IR, IP67

**MSCAM-MD**

Mini dome with audio, 420TVL, 5m IR, IP67

**MSCAM-MDA**

**Sign up for trade pricing**

Compatible for use with HDCVI mobile DVRs (requires connector change to M12 aviation connector).



Professional IP Solutions

# Scalable IP intercom solutions perfect for apartments



Connect up to 200 indoor monitors



Full HD 1080



## Apartment Series IP Door Station

- 1/2.9" 2.0MP camera with wide 158° view angle
- Dial to call each residence individually
- NFC card reader; access up to 10,000 cards
- Connect with intercom monitor(s) via network
- Backlit interface & night-time white light
- Power over Ethernet (12VDC, 802.3af)
- IP55/IK08 weather & vandal resistant front plate
- Avail. with flush or surface box (sold separately)

INTIPADSD  
(Door Station)

Mounting Boxes  
INTIPADSDFB (Flush)  
INTIPADSDSB (Surface)

## We can help with your next intercom project

Ask us about intercom pre-configuration to save you time on your next install



## Touchscreen IP Indoor Intercom Monitors



- 7" TFT capacitive touch screen (1024 x 600)
  - Record and snapshot video calls/messages
  - Prevent unwanted calls with Do Not Disturb mode
  - Alarm system integration, microSD storage\*
  - Powered via PoE or 12VDC
- \* Unit must be opened to access microSD slot, microSD card sold separately



INTIPMONKW (White)  
INTIPMONKB (Black)

Sign up for trade pricing



# Intercom solutions for multi-residence buildings & duplexes



## 2 Button Residential Door Stations

Calls monitor groups; call up to 10 monitors per button (20 total)  
 2.0MP wide camera (140°), NFC card unlock, PoE/12VDC, alarm I/O, RS485, aluminium chassis, surface mount  
 Add door expander to control a second strike via monitor



INTIPDDS2  
 (2-Button)



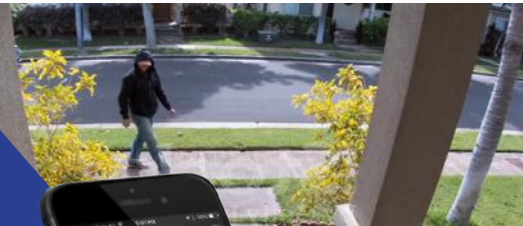
## 4 Button Residential Door Stations

Calls monitor groups; call up to 10 monitors per button (40 total)  
 2.0MP wide camera (140°), NFC card unlock, PoE/12VDC, alarm I/O, RS485, aluminium chassis, surface mount  
 Add door expander to control a second strike via monitor



INTIPDDS4  
 (4-Button)

# All-new 2-wire intercom kit for residential applications



## 2-Wire + WiFi Residential Intercom Kit

- New hybrid intercom system for intercom upgrades using existing 2-wire infrastructure
- Plug and play intercom setup, zero configuration
- Up to 200m cable run from door station to monitor
- WiFi connection via network controller and intercom monitor enables app control and intercom call alerts
- **Kit includes:** 7" touchscreen indoor monitor, 2.0MP outdoor door station with surface mount box, 2-wire network controller to connect multiple devices

- **Door Station:** Auto IR illumination, SD card slot for video messages\*, IP65/IK07 aluminium construction
- **Indoor Monitor:** 7" touchscreen, WiFi for app control, 6 channel alarm input and 1 output, SD card slot\*

INTKIT-H (2-Wire Kit)

INTMON-H (White Monitor)

INTRDS-H (Door Station)

INTCON-H (Controller)

*Sign up for trade pricing*

\*SD card sold separately, smartphone not incl.



Professional IP Solutions

# New PoE intercom kits to save you time and money



## Residential Complete IP Intercom Kit (J Series)

INTIPRKITJ2 (Complete Kit)

*Sign up for trade pricing*

- Surface mount intercom kit with door station, monitor & switch
- 1 x 1MP intercom door station
- 1 x 7" black indoor monitor
- 1 x 4-port 100M PoE switch
- Remote view via devices/app

*Switch to white monitor at no extra charge*



## Residential Complete IP Intercom Kit (G Series)

- Surface mount intercom kit with door station, monitor & switch
- 1 x 2MP intercom door station
- 1 x 7" white indoor monitor
- 1 x 4-port 100M PoE switch

INTIPRKITG-P  
(Complete Kit)



## Door Unlock Module

- Unlock a 2nd door via RS485
- \*Cannot trigger independently

INTIPDM (Expander)





# Single residence IP door stations call up to 10 monitors



## G Series Door Station

2.0MP (160°), 2-wire or Ethernet, 12VDC / PoE, alarm I/O, RS485, flush or surface mount (incl. surface), IP65 front panel

INTIPRDSG2 (2.0MP)

INTIPRDSGFB (Flush)



## J Series Door Station

1.0MP (122°), 12VDC / PoE, alarm I/O, RS485, NFC card reader, surface mount, IP65 front panel

INTIPRDSJ (1.0MP)

*Sign up for trade pricing*



## D-Series Door Station

2.0MP (158°), 12VDC / PoE, alarm I/O, RS485, NFC card reader, code keypad, flush or surface mount, IP65 front panel

INTIPRDS (Door Station)

INTIPADSDFB (Flush)

INTIPADSDB (Surface)



## IP PoE Indoor Monitors

7" touchscreen (1024 x 600), PoE / 12VDC, microSD storage (inside unit, sold separately), alarm integration, flush wall bracket included

INTIPMONKW (White)

INTIPMONKB (Black)



## IP PoE Handset Monitors

7" touchscreen (1024 x 600), wall or desktop mount, PoE / 12VDC, microSD storage, flush wall bracket included

INTIPMONDWH2 (White)

INTIPMONDBH2 (Black)

INTIPMONDH-B (Desk mount)



## Residential & Apartment IP Monitor

7" TFT capacitive touchscreen (800 x 480 pixels), add microSD card for up to 32GB storage, record / snapshot video calls/messages; DND

INTIPMON (White)



## Residential IP PoE Large Indoor Monitor

10" TFT touch-screen (1024 x 600), wall mount, PoE / 12VDC, record & snapshot, microSD card storage

INTIPMONGBL

(Black)





Professional IP Solutions

# Professional access control made easy with VIP Vision



## Professional & Compact IP Access Controllers

- Quick-install, affordable access control in small to medium enterprise
- Available in 2-door 2-way, 4-door 1 & 2-way & 8-door 1-way controllers
- Access management & CCTV integration via free Smart PSS software
- Cascade up to 255 slave controllers for over 2000 total door capacity
- Configure users/roles & departments; up to 100,000 cards & 150,000 records
- Anti-passback, multi-door unlock, multi-card open, door time-out & more
- ACCON-2C41: Compact plastic body, 4 x readers, 9/5 input/output, 9~15VDC
- ACCON-2P22: Pro metal body, 4 x readers, 8/4 input/output, 240VAC
- ACCON-2P41: Pro metal body, 4 x readers, 9/5 input/output, 240VAC
- ACCON-2P42 & 2P81: Pro metal body, 8 x readers, 20/12 input/output, 240VAC

ACCON-2C41  
(Com, 4-door 1-way)

ACCON-2P22  
(Pro, 2-door 2-way)

ACCON-2P41  
(Pro, 4-door 1-way)

ACCON-2P42 / 2P81  
(Pro, 4-door 2-way)  
(Pro, 8-door 1-way)

*Sign up for trade pricing*



## Access Control Readers

- Professional card, keypad & fingerprint access readers, LED indicators & backlit buttons, tamper protection
- NFC card readers (13.56MHz), keypad code entry & fingerprint entry models



*Sign up for trade pricing*

ACRDR-2PC

ACRDR-2LKC2

ACRDR-2MKC

ACRDR-2SKC

ACRDR-2SFC



# Watchguard access: Perfect for standalone installations



## Standalone Access Control Systems

- 125KHz card & code access, setup via reader
- Door chime relay, tamper switch & vandal lockout
- Data I/O bus for multi-station systems
- Add up to 3 x slave ACRDR100 access readers
- Add split decoded controllers for additional security
- Units include 2 x access control key cards; 12VDC

## Split-Decoder for Standalone Systems

- Splits unlock signal from reader, prevents sabotage
- Terminals for alarm integration, 3 output relays
- Connect up to 3 keypads/readers; incl: 2 x keyfobs
- Power input: 12~24VDC auto-adjusting



ACRDR100  
(IP55 rated)



ACRDR102  
(IP55 rated)



ACRDR103  
(IP65 rated)



ACRDR101  
(incl. 2 keyfobs)

\*125KHz cards also available

[Sign up for trade pricing](#)



## Electric Strikes and Electromagnetic Door Locks

\*MAGLOC brackets also available



Steel body, mortise-mount, fail-secure, 12VDC

ACLOC100



Steel body, surface-mount, fail-secure, 12VDC

ACLOC101



Chrome body, surface-mount, fail-secure, 12VDC

ACLOC104



Stainless steel, mortise, fail-safe/secure, monitored, 12VDC

ACLOC102



Stainless steel, mortise, fail-safe/secure, monitored, 12/24V AC/DC

ACLOC105



Aluminium-zinc, surface-mount, fail-safe, 270kg holding force, 12V/24VDC

MAGLOC100S



Aluminium-zinc, mortise-mount, fail-safe, 270kg holding force, 12V/24VDC

MAGLOC100M

[Sign up for trade pricing](#)



ACDSW100



ACDSW101



ACDSW102



## Door Release Switches

- Door releases, 500,000 MTBF
- **ACDSW100:** Heavy duty, sandblasted aluminium, 3 outputs (N.O, N.C, COM)
- **ACDSW101:** Slim, stainless steel, 2 outputs (N.O, COM)
- **ACDSW102:** Touch button, aluminium, 3 output (N.O, N.C, COM), red/green status LEDs, adjustable output timer 1~40s

[Sign up for trade pricing](#)



13.56 MHz



## 13.56MHz RFID Card/Keyfobs

For VIP Vision Access Control systems  
Mifare NFC chip, read-only memory

ACKEY103  
(Card, 1pc)

ACKEY104  
(Keyfob, 1pc)



Professional IP Solutions

# Connect and power your installations with VIP Vision



Supports Hi-PoE up to 60W per port



## Rackmount Managed Fast Hi-PoE Switches

- Fast 100Mbps PoE+ Base-T device ports
- Gigabit 1000Mbps Base-T & SFP Base-X uplink ports
- L2 Managed switch for security & switch customisation
- 30W per port with 2 x 60W orange Hi-PoE ports
- Total PoE load: 240W (-SWA16), 360W (-SWA24)
- Rackmount tabs for cabinet mounting

VSPOE-SWA16  
(16 port, 2x SFP & RJ45 uplink)

VSPOE-SWA24  
(24 port, 2x SFP & RJ45 uplink)

[Sign up for trade pricing](#)



## Rackmount Managed Gigabit Hi-PoE Switches

- Gigabit 1000Mbps PoE+ Base-T device ports
- 2 x SFP Base-X uplink ports for fibre backbone
- 2 x Base-T (RJ45) uplink ports (VSPOE-SWB24G4 only)
- L2 Managed switch for security & switch customisation
- 30W per port; 2 x 60W orange Hi-PoE ports
- Rackmount tabs for cabinet mounting

VSPOE-SWB16G2  
(16 port, 2x SFP uplink)

VSPOE-SWB24G4  
(24 port, 2x SFP & RJ45 uplink)

[Sign up for trade pricing](#)



# PoE switches & accessories in 100M fast & 1000M gigabit



## Fast Hi-PoE Switches

- 4 & 8 port fast switches 100M
- Supports DIN rail mounting
- 1000M RJ45 & SFP uplinks
- 30W load per port (60W HiPoE)
- Total 60W (-4H) / 96W (-8H)
- -30°~65°C operating temp.

**VSPOE-SW4H** (4 Port)  
**VSPOE-SW8H** (8 Port)



Extend up to 250m at 10Mbps

## Fast Hi-PoE Desktop Switches

- 4 & 8 port fast desktop switches 100M,
- 2 x RJ45 uplinks: 10/100M (-4F), 10/100/1000M (-8G)
- 30W per port (60W HiPoE); total 60W (-4F) / 96W (-8G)

**VSPOE-SWA4F** (4 Port)  
**VSPOE-SWA8G** (8 Port)

[Sign up for trade pricing](#)



## Gigabit Hi-PoE Switch

Desktop PoE switch, 1000M gigabit PoE ports, 30W per port & 1 x HiPoE port, 96W total

**VSPOE-SWB8G**  
(8 Port, 96W)



## Gigabit Fibre PoE Switch

4 x 1000M gigabit PoE ports, 4 x SFP fibre ports, 1000M uplink port, 30W per port & 1 x HiPoE port 90W

**VSETH-SW9GF2**  
(9 Port, 120W, SFP)



## Mini GBIC Fibre Adapters

LC connector single mode & multi-mode fibre adapters for use with switch SFP ports, supports OM1/2/3/4 (-MM1); SMF (-SM1)

**SFPM11** (Multi-mode)  
**SFPSM1** (Single-mode)



## Extended PoE Switch

- Extends PoE up to 800m to supported ePoE cameras
- Extends to 300m@100Mbps and up to 800m at 10Mbps
- Total PoE load up to 120W
- 8 x 100M PoE device ports
- 30W/port, 2 x 60W HiPoE
- RJ45 & SFP 1000M uplinks
- DIN rail mountable
- -30°~65°C operating temp.

**VSPOE-SW8E**  
(8 port, ePoE)



## PoE Midspan, Injector & Extender

**PoE Midspan & Extender:** 60W midspan, Delivers PoE to IP cameras up to 300m (<8W per cam) via 3 x PoE extenders

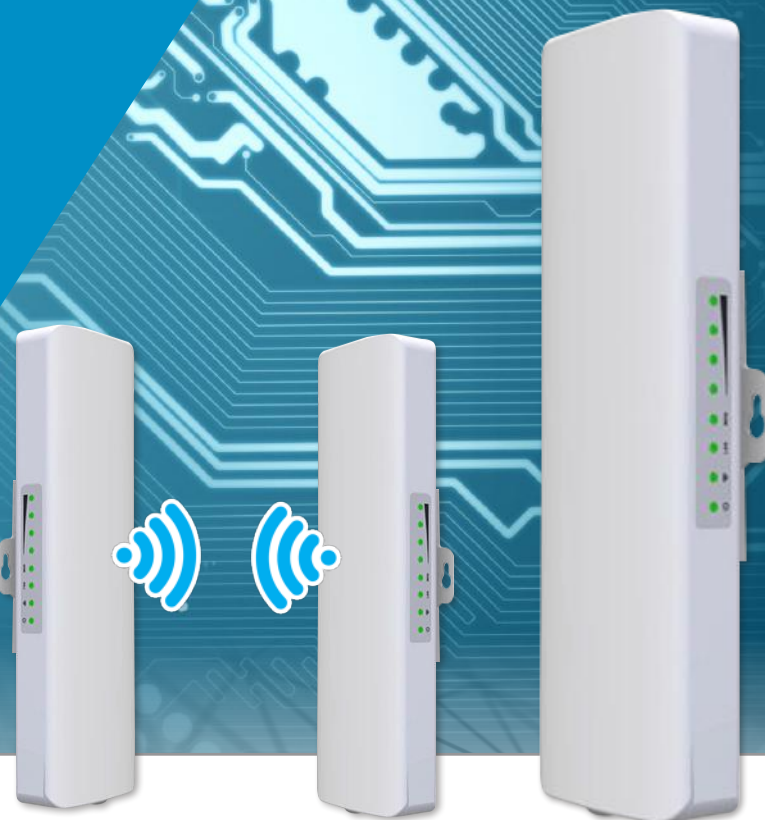
**PoE Injector:** 30W PoE+, 1000Mbps, 240VAC

**VSPOE-IN30** (Injector)    **VSPOE-MS** (Midspan)    **VSPOE-EX** (Extender)

[Sign up for trade pricing](#)

## Wireless links pre-configured to save you time

**Bridge or Point to Multi-Point**



#### Pre-Configured 5.8GHz Wireless AP Bridges

- Point-to-point & point-to-multipoint applications
- We program units for plug & play, saving you time
- 5.8GHz wireless access point, 900Mbps transfer speeds
- Up to 5km point-to-point range (LoS, H:60° / V:30°)
- PoE; pole & wall mount kits included; IP65 rated

Pre-configured links at no extra charge

LGAP300 (Single Unit)	LGAP300-PACKA (2 x Wireless APs)	LGAP300-PACKB (3 x Wireless APs)
--------------------------	-------------------------------------	-------------------------------------

**Sign up for trade pricing**



#### 4G/WiFi Modem Router

- 4G LTE: 300/50Mbps down/up
- 4G bands FDD LTE: B1, 3, 8, 20, 28 and TDD LTE: B38, 40, 41
- 4 x Gigabit (1000M) ports, incl. 1 x Gigabit LAN/WAN port
- Dual band WiFi 2.4/5GHz, up to 1167Mbps, 2x2 MIMO
- Micro-SIM sold separately
- Available in white or black

VSWAN4GHWI3W (White)  
VSWAN4GHWI3B (Black)



RUT241

#### Industrial 4G/WiFi Modem Router

- 4G/LTE (Cat 4) support with mini-SIM tray (2FF)
- 2 x 100M Ethernet ports (1 x LAN, 1 x LAN/WAN)
- Antennas: 2 x SMA 4G input, RP-SMA WiFi input
- -40~75°C operating temperature, 9~30VDC
- Supports DIN rail mounting



# WiFi & Ethernet accessories to integrate with surveillance



## 5 Port Gigabit Switch

- 1000M gigabit Ethernet switch
- Unmanged switch plug & play
- 5VDC, -10~50°C working temp.

VSETH-SW5G2 (5 port)



## 16 & 24 Port Gigabit Ethernet Switches

- 1000M gigabit Ethernet switches in professional full metal enclosure
- Unmanged switch, overvoltage protection up to 6kV
- 100~24VAC, includes rackmount tabs for cabinet mounting

VSETH-SW16G  
(16 port)

VSETH-SW24G  
(24 port)

[Sign up for trade pricing](#)



## Indoor Wireless APs

- 2.4/5GHz dual band access points
- Throughput up to 600/2400Mbps (2.4/5GHz)
- Gigabit uplink port (Pro: 2 x GbE uplink)
- **Plus:** 140m<sup>2</sup>, WiFi 6, PoE, 2x2 MIMO
- **Pro:** 122m<sup>2</sup>, WiFi 5, PoE / PoE+, 3x3 MIMO
- **LR:** 185m<sup>2</sup>, WiFi 6, PoE+, 4x4 MIMO
- PoE injector / PoE switch are sold separately
- Variety of other indoor access points available for special order, subject to availability



WT5-U6P (Plus)

WT5-UAPACPROV2 (Pro)

WT5-U6LR (Long Range)

[Sign up for trade pricing](#)



## Outdoor Wireless AP

- 2.4/5GHz (300Mbps/1733Mbps)
- Gigabit uplink port, PoE powered
- Create mesh w/ multiple Flex units
- **Bracket:** Also supports WT5-ULB

WT5-UAPFLEXHD (AP)

UB-AM (Bracket)



## 5GHz Wireless Links

- 5GHz point to point links
- 2x2 MIMO technology
- 120°, 25dBm, 1000M

WT5-ULB (Litebeam)

WT5-ULB-PACKA (2pc PtP)

WT5-ULB-PACKB (3pc PtMP)



## PowerBeam AC Antenna

- Mechanical ±20° up/down tilt
- 5GHz, 25dBi gain, up to 450Mbps
- Range >25km in ideal conditions
- Includes radome shield

WT5-UPBAC52  
(5.8GHz, 25dBi)

# Best value deals on essential CAT5e & CAT6 data cable



## CAT5e/CAT6 305m Pullboxes

- 305m unterminated network cable
- Supports Power over Ethernet
- ACMA approved
- **CAT5e:** Blue, yellow & white, Ø0.47mm
- **CAT6:** Available in blue, red and grey

**CAT5BLU-47MM**

(CAT5e Blue)

**CAT5EYL-47MM**

(CAT5e Yellow)

**CAT5EWH**

(CAT5e White)

**CAT6BLU-50MM**

(CAT6 Blue)

**CAT6RED-50MM**

(CAT6 Red)

**CAT6GRA-50MM**

(CAT6 Grey)

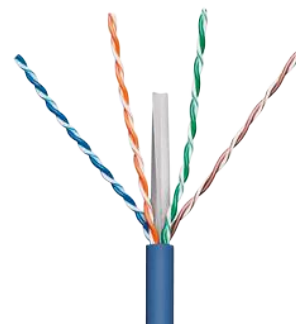
*Sign up for trade pricing*



### Modular RJ45 Plugs

**RJ45PLUG-C5 (CAT5)**

**RJ45PLUG-C6 (CAT6)**



## SECURVIEW

### CAT5/6 Pre-terminated Leads

- CAT5e and CAT6 patch leads in variety of colours
- Ask us about custom colour leads in CAT5 or CAT6
- Also available in ultra-thin CAT6A varieties

#### CAT5e Leads (Blue)

**NETCABLE20-Z (20m)**

**NETCABLE30-Z (30m)**

#### CAT6 Patch Leads (Various Colours)

**NETCABLE025X6 (0.25m)**

**NETCABLE050X6 (0.50m)**





# Cable rolls for alarm, CCTV and access control installs



## 100m 4-Core and 6-Core Alarm Cable

7 / 0.20mm

D4CC (4-Core)

D6CC (6-Core)

14 / 0.20mm

D4CC2 (4-Core)

D6CC2 (6-Core)



## 100m Figure 8 Cable Rolls

White, blue or red/black

DF8C (14/0.20, white)

DF8C2 (24/0.20, blue)

DF8C4RB (24/0.20, R/B)

DF8C4W (24/0.20, W)

DF8C3 (48/0.20, R/B)



## 100m Power/Coax Cable

- 100% copper conductor; 95% braiding; 75Ω RG59 coax cable
- 24/0.20mm figure 8 cable

DCOAXPWR24FCBP(100m roll)



## 200m 6-Core Access Cable

- Shielded cable for access control
- 6-core 7/0.20mm, tinned copper
- Aluminium foil shielded, grey PVC

AC200G (200m roll)



## 200m 4-in-1 Access Cable

- 6-core 7/0.2mm shielded cable, 24/0.2mm figure 8, 14/0.2mm 4-core and 6-core all-in-one spool

APAC200G (200m roll)



## 100m RG59 Coax Cable

- Solid copper core with 98% braid shield and solid PE dielectric

DCOAXFC (100m)



## 20m Power and 4K BNC Video Lead

- Preterminated; for HDCVI CCTV
- Unable to be daisy-chained

VIDPWR20RG59 (20m)



## 30m Power and 4K BNC Video Lead

- Preterminated; for HDCVI CCTV
- Combine 2pcs for 60m@4K

VIDPWR30RG59 (30m)



# AVOL

Professional Electrical Supplies

## Add back-up power and deliver more installation value

Offer battery backup with every CCTV system sold



UPS-C600-L  
(360W, 2 inputs)



UPS-C1000-L  
(600W, 3 inputs)



UPS-C1500-L  
(900W, 4 inputs)



### UPS-C Series Line Interactive UPS

- Power backup & protection for up to 4 AUS 3-Pin devices
- Alarm alerts for battery mode, faults and low power
- Line interactive UPS with simulated sine wave output
- Boost and buck AVR for voltage stabilisation
- Auto-voltage regulation, RJ45 passthrough protection

*Sign up for trade pricing*



# Prevent footage loss and protect equipment



## PE Series Tower UPS - Step Wave

- Line interactive uninterruptible power supply
  - Step wave, standard AU sockets, LED or LCD display
  - Auto-voltage regulation, RJ45 over-voltage protection
- UPS650VA (360W, 2 inputs, 28min@72W)  
 UPS850VA (480W, 2 inputs, 26min@95W)  
 UPS1000VA (600W, 4 inputs, LCD, 44min@120W)  
 UPS1500VA (900W, 4 inputs, LCD, 32min@180W)  
 UPS2000VA (1200W, 4 inputs, LCD, 24min@240W)



## PR Series Tower UPS - Sine Wave

- Pure sine waveform for greater stability and compatibility
  - Connect devices easily via IEC320 sockets
  - AVR stabilises output voltage
  - RJ45 protection against line overvoltage for LAN/ADSL
- UPS1000VA-S (1000W, 4 inputs, LCD, 44min@120W)  
 UPS1500VA-S (1500W, 4 inputs, LCD, 32min@180W)  
 UPS2000VA-S (2000W, 4 inputs, LCD, 24min@240W)



**Add Battery Pack to Extend Uptime**



## PR Series Rackmount UPS - Sine Wave

- Line interactive uninterruptible power supply (2U size)
  - Pure sinewave for greater stability & device compatibility
  - IEC sockets (up to 8 x 10A, 1 x 16A), LCD info display
  - Auto-voltage regulation, RJ45 over-voltage protection
- UPS1700VAXCRM (1350W, 8 input, 30min@270W)  
 UPS2200VAXCRM (1800W, 8 input, 47min@360W)  
 UPS3300VAXCRM (2700W, 9 input, 31min@540W)

**Only 330mm Depth - Fits in 450mm Deep 19" Racks**



## Compact Rackmount UPS - Sine Wave

- Online UPS for zero-delay power supply switching (2U)
  - Pure sinewave for greater stability & device compatibility
  - IEC sockets (up to 6 x 10A, LCD info display)
  - Auto-voltage regulation, RJ45 over-voltage protection
  - USB port & HID protocol interfacing with Windows PCs
  - RS232 for PSU management & local/remote shutdown
- UPS1100VA-ORM (900W, 6 input, 32min@180W)

# Hardwired business security systems up to 64 Zones



## Complete Hardwired WGAP864 Alarm System

- 8 zone expandable up to 64 zones
- 8 partitions, up to 5 programmable outputs (expandable up to 25)
- Dedicated panic zone
- Monitored siren output
- Kit includes 864 panel, choice of white/black keypad, 12V7A backup battery, 3 x dual-tech PIRs, 2 x reed switches, outdoor siren/strobe, indoor piezo siren, 24VDC PSU
- Expand for more zones, app control, wireless TX/RX & more



**WGAP864PACK**  
(8 Zone Alarm Kit)

**WGAP864PW2**  
(Panel + White Keypad)  
**WGAP864KPW/B**  
(White or Black Keypad)

**WGAP864EXP816** (8 zone expander, 8-16)  
**WGAP864EXP1664** (8 zone expander, 16+)  
**WGAP864WRX2** (2CH wireless RX & keyfobs)  
**WGAP864WRX16V2** (16CH wireless RX)



## WiFi / IP Module for 864

- 864 alarm control via HYYP app
- Support RJ45 or WiFi connection
- Arm, disarm, trigger outputs & more

**WGAP864IPMW**  
(Phone not incl.)



## Hardwired Siren and Strobes

- **W24SIREN**: Euro-style siren, 115dB piezo siren, blue strobe, tamper
- **COS**: Complete outdoor siren, AC/DC 115dB siren, tamper, strobe
- **WGSIR-500**: Polycarbonate, battery backup, 120dB, tamper, strobe, IP55 rated
- **WGSIR-900**: Polycarbonate, battery backup, 120dB, tamper, strobe, IP54 rated

**W24SIREN**

**COS**

**WGSIR-500**

**WGSIR-900**

**Sign up for trade pricing**

\*Internal sirens also available (flush & surface)



# Wide range of hardwired sensors to support your install



## **TAKEX** Wide Angle & Curtain PIRs

- PIR detectors, 11m range, 84° beam
  - Pet immune: Immune up to 20kg
  - Curtain: Vertical beam up to 16.5m
- PIR-T45WP (Pet Immune)  
PIR-T46C (Curtain PIR)  
PIR-T4BKT (Bracket)



## **Honeywell** **PSA** Smoke Detectors

- Photoelectric, 9V backup, NO/NC
- Interconnects up to 24 smoke alarms
- Certified to AS3786:2014 standard

SMODET4-N (4-Wire)

### Standalone Models

- SMODET240V (Mains Power)  
SMODET9V1 (Wireless)



## **Watchguard** Heavy Duty Reed Switches

### Heavy Duty Reed Switches

- Heavy duty, install with up to 50mm gap, NC reed switch output, 10W rated, 250mm leads, zinc alloy
- 106 x 16 x 16mm dimensions

- RSW-M1 (Grey)  
RSW-M1W (White)  
RSW-M1B (Brown)



## **Watchguard** Hardwired PIR Detectors

- PIRHDWT2: 15m PIR sensor, dual pyro, tamper, N.C, incl. brackets
- ALH-PIRMW: 15m PIR/microwave sensor, N.C, tamper, wall mount
- ALH-PIRGS: 15m PIR+glass/shock sensor, N.C, 10m glass break dist.
- ALH-PIR360: 360° N.C/N.O PIR sensor, Ø8m range (at 4.5m height)

PIRHDWT2 ALH-PIRMW ALH-PIRGS ALH-PIR360

[Sign up for trade pricing](#)

## **Watchguard** Hardwired Reed Switches and Accessories



N.C reed switch, 19mm gap, also in grey or brown

RSW-P1 (White)

Compact white N.C wired reed switch

DSRLW

Large ROLA style N.C wired reed switch

DSRHDW2

Concealed N.C/N.O wired reed switch (white)

DCRW

Heavy duty roller shutter door N.C wired reed switch

DRSR

Supervised wireless reed switch for 864 panel, 100m LoS

WGAP864WDCV2

Door loops, stainless steel tube, metal box or plastic clip

DLW (plastic)  
DLB (metal)

[Sign up for trade pricing](#)

# Wireless alarms that interface with your CCTV installation

*Integrate alarm system with CCTV video link*



## Watchguard D1 Series 4G / WiFi Alarm System

- Supports up to 150 wireless peripherals (6 sirens, 64 keyfobs)
  - WiFi (2.4GHz) and 4G connectivity for app control & alerts
  - 433MHz, code hopping, AES128 encrypted wireless tx
  - Utilise app to arm/disarm, monitor & check battery status
  - Calls and/or SMS up to 5 phone numbers on alarms
  - Built-in lithium battery up to 12hrs standby uptime
  - Wide range of additional accessories sold separately
- \*SIM card sold separately



**ALMKIT-D1**  
(Alarm kit)

**Kit includes:**  
Alarm hub, PIR, reed switch & keyfob



## Wireless Accessories for Watchguard D1 Series 4G/WiFi Alarm System

- Remote Control Keyfob (-RC), Panic Button (-PNB), Outdoor Strobe & Siren (-SRX), PIR Detector (-PIR), Wireless Smoke Alarm (-SMK), Door & Window Sensor (-RSW)
- Wireless Control Keypad (-KPD), Indoor Siren (-SIR)

ALM-D1-RC ALM-D1-PNB ALM-D1-SMK ALM-D1-RSW ALM-D1-SRX ALM-D1-PIR ALM-D1-KPD ALM-D1-SIR

*Sign up for trade pricing*



# Watchguard Force wireless security for ease of operation



\* 4G SIM for, SMS & B2B monitoring sold separately

## Watchguard Force Wireless WiFi / 4G Alarm Pack

The perfect alarm solution for homes & small businesses. Receive real-time notifications, control and monitor the alarm system via the smartphone app when connected to WiFi

- 4G & Contact ID for back to base monitoring\*
- WiFi self monitoring via Smart Home app
- Quick config of wide range of alarm sensors
- Reliable backup with 6 hours battery uptime
- Add up to 50 sensors, 10 remotes & 50 tags
- SMS power loss notifications\*
- Kit includes alarm hub, indoor PIR & bracket, reed switch, 2 x keyfob & 2 x RFID tags

**ALL-PACK1**  
(WG Force Kit)



## Sensors & Accessories for Watchguard Force Alarms

- Indoor PIR & Reed (-PIR1), Indoor PIR (-PIR2), Outdoor PIR (-PIR3), Vibration & Reed (RSW1), Reed (RSW2)
- Wireless smoke detector (-SMD1), Outdoor Siren & Strobe (-SIR1), Indoor AC Siren (-SIR2)
- Panic Button (-PNB1), PTZ Camera (-PTZC)

ALL-PIR1    ALL-PIR2    ALL-PIR3    ALL-RSW1    ALL-RSW2    ALL-SMD1    ALL-SIR1    ALL-SIR2    ALC-PNB1    WGF-PTZC

**Sign up for trade pricing**

# ENSA™

LED Lighting & Energy Saving

## High power LED flood lighting for large projects



## Ask how we can assist you with your next project

Advice, resources and lighting simulations for your LED project submission

### ENSA™

#### LFL-F Series High Power LED Floods

- Available in 480W, 720W and 960W models
- Lumileds LEDs exceptional light output (+165lm/W)
- 60° beam angle, >80 CRI, 6500K cool white, IP66
- Customise lighting for large areas perfectly with 360° rotate & 140° tilt individually adjustable LED modules
- Ask us about lighting simulation & project assistance

LFL-F480-C (480W, 79,200lm)    LFL-F720-C (720W, 118,800lm)    LFL-F960-C (960W, 158,400lm)

[Sign up for trade pricing](#)



**360° Rotate  
& 140° Tilt  
Modules**





# ENSA™

LED Lighting & Energy Saving

## Performance LED lighting for your next project



### ENSA™

#### LSL-B Series: LED Area/Street Lights

- Built in photocell models for dusk/dawn switching
- Available in 150W and 200W models
- Versatile mounting with 5 adjustable light brackets
- Slip fit, fixed/adjust pole, trunnion & yoke wall mounts
- 135lm/W, 5000K cool white, >70 CRI, 50,000hrs lifespan
- 155 x 85° beam angle, 1~10V / PWM dimmable
- IP66/IK08 weather/vandal rated, 20KV surge protection



LSL-B150-CP  
(150W, 20,250lm)

LSL-B200-CP  
(200W, 27,000lm)

[Sign up for trade pricing](#)



LSL-BKTS  
(Slip Fitter)



LSL-BKTT  
(Trunnion)



LSL-BKTY100 (150W)  
LSL-BKTY200 (200W)  
(U-Wall Mount)



LSL-BKTP  
(Fixed Pole)



LSL-BKTA  
(Adjust. Pole)

### ENSA™

#### LFL-G2 Series: High Power LED Floods

- Superb 160lm/W luminous efficacy, >80 CRI
- Available in 240W, 360W, 480W, 720W & 960W
- 180° adjustable U-bracket to direct luminaires
- Incredible 100,000hrs rated LED lifespan
- 5000K cool white colour temperature
- Wide 60°x100° beam angle models (30° optional)
- IP67 weather rated; ideal for sporting grounds



LFL-G240-C2  
(240W, 38,400lm)

LFL-G360-C2  
(360W, 57,600lm)

LFL-G480-C2  
(480W, 81,600lm)

LFL-G720-C2  
(720W, 115,200lm)

LFL-G960-C2  
(960W, 153,600lm)

[Sign up for trade pricing](#)

# ENSA™

LED Lighting & Energy Saving

## Deliver efficiency and security with ENSA Lighting



### ENSA™

#### LFL-B2 Series Pro LED Flood Lights

- Superb 150lm/W luminous efficacy, >70 CRI
- Built with high performance Lumiled LEDs
- Wide 120° beam angle, circular light distribution
- 3000K/5000K warm/cool white colour temp.
- Outstanding 50,000hrs rated LED lifespan
- Aluminium & toughened glass construction
- IP65 weather rated, 5 year warranty

LFL-B20-W2 (20W, 3000K)  
LFL-B20-C2 (20W, 5000K)

LFL-B30-W2 (30W, 3000K)  
LFL-B30-C2 (30W, 5000K)

LFL-B50-W2 (50W, 3000K)  
LFL-B50-C2 (50W, 5000K)

LFL-B80-C2  
(80W, 5000K)

LFL-B100-C2  
(100W, 5000K)

LFL-B150-C2  
(150W, 5000K)

LFL-B200-C2  
(200W, 5000K)

### ENSA™

#### LFL-C3 Series LED Sensor Flood Lights

- 140lm/W luminous efficacy, >80 CRI
- Effective light distribution with 120° beam angle
- Adjustable PIR detection up to 8m with a 140° arc
- Adjustable on-time delay (5s ~ 5min)
- 5000K cool white, 50,000hrs rated LED lifespan
- 240° adjustable U-bracket & PIR bracket for flexibility
- IP66 weather rated, 3 year warranty

LFL-C20-CS3  
(20W, 2400lm)

LFL-C30-CS3  
(30W, 3600lm)

LFL-C50-CS3  
(50W, 6000lm)



*Sign up for trade pricing*







# AVOL

## Professional Electrical Supplies

# Ultimate value LED flood lighting with AVOL H-Series



## H Series LED Flood Lighting

- Available in 50W, 100W, 150W and 200W models
- 80lm/W, 6000K, 120° beam, IP66 rated, preterminated AC plug
- **Sensor Flood (-CS):** 12m arc PIR motion sensor, in 50W, IP65

LFL-H50-C  
(50W, 4000lm)

LFL-H100-C  
(100W, 8000lm)

LFL-H150-C  
(150W, 12000lm)

LFL-H200-C  
(200W, 16000lm)

LFL-H50-CS  
(50W, Sensor)



[Sign up for trade pricing](#)



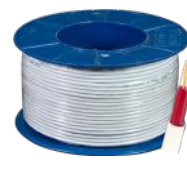
TPS-15TE100  
(100m Drum)

1.5mm<sup>2</sup> Twin & Earth Flat TPS Cable



TPS-15TA100  
(100m Drum)

1.5mm<sup>2</sup> Twin Active Flat TPS Cable



TPS-15SD100  
(Red, 100m Drum)

1.5mm<sup>2</sup> SDI Cable



TPS-25TE100  
(100m Drum)

2.5mm<sup>2</sup> Twin & Earth Flat TPS Cable



TPS-25TA100  
(100m Drum)

2.5mm<sup>2</sup> Twin Active Flat TPS Cable



TPS-25SD100  
(Red, 100m Drum)

2.5mm<sup>2</sup> SDI Cable

# ENSA™

LED Lighting & Energy Saving

## Commercial high bays with superior energy efficiency

IP69K rated for food prep facilities



### ENSA™

#### LHB-D Series UFO High Bays

- Light-weight high bays in 100W, 150W & 200W
- 130lm/W, >80 CRI, 50,000hrs rated LED lifespan
- Compact IP66 weather rated body; metal eyelet
- 5700K cool white, 90° beam angle as standard
- Optional: 60° / 120° lenses; 180° U-bracket

LHB-D100-C  
(100W)

LHB-D150-C  
(150W)

LHB-D200-C  
(200W)

[Sign up for trade pricing](#)



### ENSA™

#### LHB-F Series: Food Grade High Bays

- Available in 100W, 150W or 200W models
- 135lm/W, >80 CRI, 50,000hrs rated LED lifespan
- IP69K rated for pressure cleaning in food prep facilities
- In 4000K & 5700K natural or cool white, 120° beam angle
- NSF, ETL, DLC, SAA, IPART, VEET certifications

LHB-F100-C/N  
(100W)

LHB-F150-C/N  
(150W)

LHB-F200-C/N  
(200W)

[Sign up for trade pricing](#)





# AVOL

Professional Electrical Supplies

## Excellent value for performance with AVOL lighting



### LHB-E Series LED High Bays

- High 100lm/W light output in 100W, 150W & 200W
- 90° beam angle, >80 colour rendering index
- 35,000hrs LED lifespan, 6000K cool white colour temp.
- IP65 rated, neat integrated driver design
- Pre-terminated 3-pin AC plug, mounting eyelet

LHB-E100-C  
(100W)

LHB-E150-C  
(150W)

LHB-E200-C  
(200W)

[Sign up for trade pricing](#)



### LSL-C Series LED Street Lights

- 110lm/W light output in 50W, 100W, 150W & 200W
- 90° x 130° beam angle, >80 colour rendering index
- 35,000hrs LED lifespan, 6000K cool white colour temp.
- IP65 rated, neat integrated driver design
- Unterminated power; Ø62mm pole installation

LSL-C50-C  
(50W)

LSL-C100-C  
(100W)

LSL-C150-C  
(150W)

LSL-C200-C  
(200W)

[Sign up for trade pricing](#)

# Fantastic Fumagalli Deals



## Round & Square LED Bollard Lights

- In grey models in different styles; CCT switchable
- Switch to 2700K/4000K/6500K

Carlo (6W)  
FU-CAR-6G

Ester (10W)  
FU-EST-10G



## Wallwashing LED Bulkhead Light

- 3W; grey/black styles;
- 2700K/4000K/6500K

Lorenza (3W)  
FU-LOR-3G  
FU-LOR-3B



## Wall Recessed LED Lights

- IP55, shock resistant, black/grey

Nina (6W)  
FU-NIN-7G  
FU-NIN-7B



## Italian Made LED Street & Area Lights

- Ø60mm mount, IP65 rated, shock-resistant, no-paint/rust lifetime guarantee; light only, pole/arms sold separately, black/grey

Beppe (50W,  
Grey Only)  
FU-BEP-50G

Vivi (50W)  
FU-VIV-50G  
FU-VIV-50B

Giorgio (40W,  
Grey Only)  
FU-GIO-40G

Gino (60W)  
FU-GIN-60G  
FU-GIN-60B

[Sign up for trade pricing](#)

## Pair your Fumagalli LED light with poles & arms

Single, double & triple light-arms & poles up to 6m with FumaTech construction



# Fumagalli modern Italian light poles, arms and bases



**OVER  
20%  
OFF**



## Febo & Ektor Light Poles

- Italian modern design light poles
- Ø60mm mount for lights & brackets
- Uses FumaTech® pole technology
- Poles incl. J-bolts & bolt template
- Available in black or grey colour
- Supports pilar & midipilar (right)



- Hot dip galvanised structural inner pole
- High density, rigid & durable PU expanse
- Rust-free, shock resistant, UV stabilised, self extinguishing resin outer pole



**Febo (1m,  
Black Only)**  
FU-FEB-1B

**Ektor (2.5m)**  
FU-EKT-25G  
FU-EKT-25B

**Ektor (4m,  
Grey Only)**  
FU-EKT-4G

**Ektor (6m)**  
FU-EKT-6G  
FU-EKT-6B

*Sign up for trade pricing*

## Midipilar Pole Brackets

- 470mm from pole, grey/black
- FU-MID-P1G / B (Single)
- FU-MID-P2G / B (Double)
- FU-MID-P3G / B (Triple)



## Pilar Pole Brackets

- 610mm from pole, grey/black
- FU-PIL-P1G / B (Single)
- FU-PIL-P2G / B (Double)

## Midipilar Wall Brackets

- 420mm from wall, grey/black
- FU-MID-WG / B:



## Pilar Wall Brackets

- 650mm from wall, grey/black
- FU-PIL-WG / B:

## New Lot Light Base

- Pedestal for surface or ceiling mount
- Ø60mm mount; grey/black colours

FU-NEW-G  
FU-NEW-B



**ENSA™**

## E27 and E40 Retrofit LED Lights

- Up to 130lm/W, 80 CRI, >15,000hrs lifespan, 4000K
- Ø138 x 231mm (Round style, 45W, E27 base only)
- Ø110 x 275mm (Tulip style, 40W, E27 or E40 base)

**Round:**  
LBL-D45-E27N  
(E27 only)

**Tulip:**  
LBL-D40-E27N  
LBL-D40-E40N

**ENSA™**

## 160W Retrofit E40 LED High Bay Light

- Quick fit high bay LED
- 125lm/W, >80 CRI, 25,000hrs rated lifespan, 4000K natural white



**160W:**  
LBL-D160-E40N  
(4000K, E40)



### E27 Lamp Holders 1.5m

LHC-E27-15 (bare wire)  
LHC-E27-15P (inc. plug)



### LED Base Converters

E27P-E40L (E27 power to E40 light)  
E40P-E27L (E40 power to E27 light)

# ENSA™

LED Lighting & Energy Saving

## Intelligent lighting to improve security & energy savings



### ENSA™ IP65 LED Sensor Batten Lights

- 2ft/4ft models, microwave sensor, set on-time duration
- **S2/SE Series:** Adjustable 2 stage dim (100% -> Dim -> Off), +80lm/W, 120° beam angle, 35,000hrs LED lifespan, IP65
- **SE Series:** 2hrs up-time backup battery, AS2293.3
- **S Series:** On/off mode only (100% -> Off), +75lm/W, 140° beam angle, 50,000 LED lifespan, IP65 rated

**S2 - Sensor, SE - Sensor/Battery**

LEDBT18WS2 (2ft, 18W)

LEDBT36WS2 (4ft, 36W)

LEDBT18WSE (2ft, 18W)

LEDBT36WSE (4ft, 36W)

**S - Sensor Batten**

LEDBT18WS (2ft, 18W)

LEDBT36WS (4ft, 36W)

[Sign up for trade pricing](#)

### ENSA™ 16W LED Oyster Light Series

- In standard, sensor & sensor+battery backup
- 1200lm, 120° beam angle, 30,000hrs lifespan
- 3000K warm (-W) or 5000K cool (-C) colour temp.
- Frosted diffuser, IP66 & IK10 weather/vandal rated
- **Sensor:** Adjustable on-time delay / standby modes
- **Battery:** 3.7V 1500mAh NiMH >5hr uptime at 1.2W

LOL-A16-W/C  
(Standard)

LOL-A16-WS2/CS2  
(Sensor Light)

LOL-A16-WSE/CSE  
(Sensor & Battery)

[Sign up for trade pricing](#)



# Commercial LED lighting for new fitouts or LED upgrades






## ENSA™

### LPL-C Series LED Panel Lights

- 40W, 4800lm (120lm/W), 110° beam angle
- 5000K cool white colour temperature
- Frosted diffuser, 3 different mounting options
- UGR <22, 300 x 1200mm hole cut size

**LPL-C40-C** (40W, 4800lm)

**Mounting Kits**  
 LPL-C-S (Surface)  
 LPL-C-R (Recessed)  
 LPL-C-H (Hanging)

## ENSA™ Intelligent Motion Sensor & Dusk/Dawn Switches



<ul style="list-style-type: none"> <li>• 12m 180°</li> <li>• Wall mount</li> <li>• PIR detection</li> <li>• IP65 rated</li> </ul> <p><b>ENSA-PS1</b></p>	<ul style="list-style-type: none"> <li>• 4m x 20m</li> <li>• Corridors</li> <li>• PIR detection</li> <li>• IP20 rated</li> </ul> <p><b>ENSA-PS2</b></p>	<ul style="list-style-type: none"> <li>• Ø6m 360°</li> <li>• Recessed</li> <li>• PIR detection</li> <li>• IP20 rated</li> </ul> <p><b>ENSA-PS3</b></p>	<ul style="list-style-type: none"> <li>• Ø20m 360°</li> <li>• Ceiling mount</li> <li>• PIR detection</li> <li>• IP65 rated</li> </ul> <p><b>ENSA-PS4</b></p>	<ul style="list-style-type: none"> <li>• Ø8m 360°</li> <li>• Concealed</li> <li>• Microwave</li> <li>• Indoor only</li> </ul> <p><b>ENSA-MS1</b></p>	<ul style="list-style-type: none"> <li>• Ø16m 360°</li> <li>• Ceiling mount</li> <li>• Microwave</li> <li>• IP20 rated</li> </ul> <p><b>ENSA-MS2</b></p>	<ul style="list-style-type: none"> <li>• 15m 180°</li> <li>• Wall mount</li> <li>• Microwave</li> <li>• IP65 rated</li> </ul> <p><b>ENSA-MS6</b></p>	<ul style="list-style-type: none"> <li>• 2 ~ 100 Lux</li> <li>• DIN rail/probe</li> <li>• Dusk/dawn</li> <li>• IP65 rated</li> </ul> <p><b>ENSA-LC3</b></p>	<ul style="list-style-type: none"> <li>• 5 ~ 50 Lux</li> <li>• Wall clip</li> <li>• Dusk/dawn</li> <li>• IP65 rated</li> </ul> <p><b>ENSA-LC1W</b></p>
--	---	--	--	--	--	--	---	--

**Sign up for trade pricing**



## ENSA™

### 18W PIR Sensor Tube Lights

- 4ft / 1212mm, T8 size, 6000K
- 18W, 120lm/W, 120° beam angle
- 8m PIR motion detection
- 60s on-time, dims to 30% on standby
- Includes LED starter for upgrades

**LTU-C18-CS2** (1800lm)



## ENSA™

### 13.5W LED Linkable Cabinet Light

- 1050lm output, 3000K warm white
- Connect up to 3 LED lights together
- 10 year rated lifespan (30,000hrs)
- Incl. end-to-end connectors, surface and right angle mounting clips

**LEDBR13W3K** (13.5W, 3000K)

# Electrical range by AVOL



**Three Phase Round Pin Plugs (250V, 500V)**

- 3, 4 & 5 Round Pin
- Available from 10A - 50A
- IP66 weather rated



**Angled Electrical Pin Plugs (250V, 500V)**

- 3, 4 & 5 Round Pin
- Available from 10A - 50A
- IP66 weather rated



**Extension Sockets (250V, 500V)**

- 3, 4 & 5 Round Pin Sockets
- Available from 10A - 50A
- IP66 weather rated



**Industrial Sockets**

- 3, 4 & 5 Round Pin, 3 Flat Pin Sockets
- Available from 10A- 50A, IP66 rated



**Industrial Switch & Socket**

- Surface mounted sockets with hinged lids and rotary switch
- 3, 4 & 5 Round Pin, 3 Flat Pin Sockets
- Available from 10A - 50A, IP66 rated



**3 Flat Pin Plug & Extension Socket (250V)**

- Available in 10A & 15A
- IP66 weather rated



**3 Pin Flat Appliance Inlet (250V)**

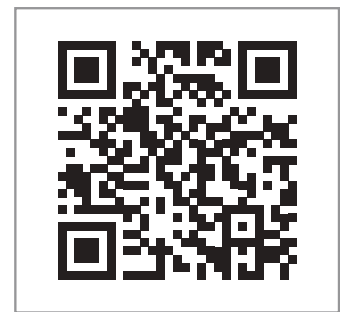
- Available in 10A and 15A
- IP66 weather rated



**Round Pin Appliance Inlets (250V, 500V)**

- Available in 3, 4 & 5 Round Pin
- Available from 10A - 50A, IP66 rated

**Sign up for trade pricing**



Hundreds of AVOL electrical models available for your installation, see them all on our website



# AVOL complete electrical & comms conduit (AS/NZ2053)



## Orange Heavy Duty Rigid Conduit (4m)

- UV resistant PVC-U, 5 year warranty
- Electrical; complies to AS/NZS2053

CON140 (Ø20mm)      CON143 (Ø40mm)  
 CON141 (Ø25mm)      CON144 (Ø50mm)  
 CON142 (Ø32mm)      CON145 (Ø63mm)

**Sign up for trade pricing**



## Medium Duty Rigid Conduit Grey (4m)

- UV resistant PVC-U, 5 year warranty
- Electrical; complies to AS/NZS2053

CON100 (Ø20mm)      CON103 (Ø40mm)  
 CON101 (Ø25mm)      CON104 (Ø50mm)  
 CON102 (Ø32mm)      CON105 (Ø63mm)

**Sign up for trade pricing**



## Medium Duty Rigid Conduit White (4m)

- UV resistant PVC-U, 5 year warranty
- Telecom; complies to AS/NZS2053

CON120 (Ø20mm)  
 CON121 (Ø25mm)  
 CON122 (Ø32mm)

**Heavy Duty for Solar Cabling**  
 CON161 (Ø25mm, Grey HD)



## Orange HD Corrugated Conduit

- UV resistant PVC-U, 5 year warranty
- Electrical; complies to AS/NZS2053

CCN140 (Ø20mm, 25m)  
 CCN141 (Ø25mm, 25m)  
 CCN142 (Ø32mm, 25m)  
 CCN143 (Ø40mm, 25m)  
 CCN144 (Ø50mm, 25m)  
 CCN151 (Ø25mm, 25m, Grey, Solar)



## Grey MD Corrugated Conduit

- UV resistant PVC-U, 5 year warranty
- Electrical; complies to AS/NZS2053

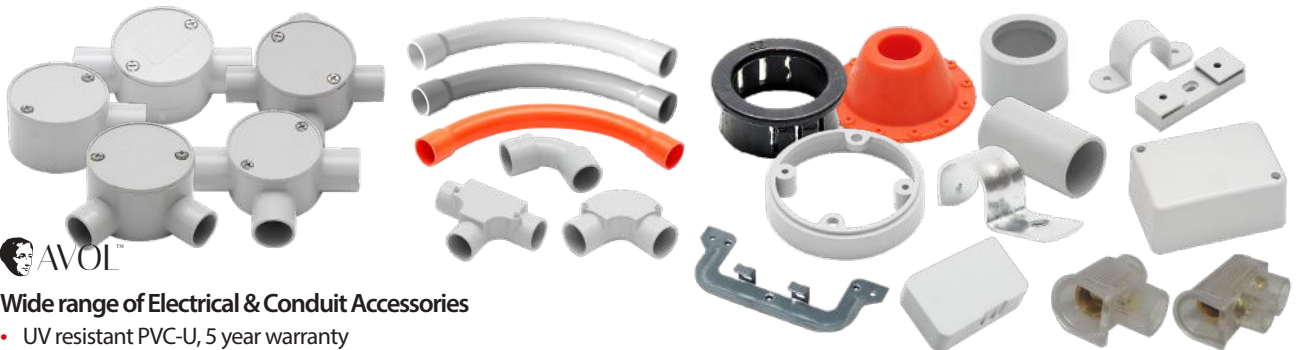
CCN100 (Ø20mm, 50m)  
 CCN101 (Ø25mm, 25m)  
 CCN105 (Ø25mm, 50m)  
 CCN102 (Ø32mm, 25m roll)  
 CCN103 (Ø40mm, 25m roll)  
 CCN104 (Ø50mm, 25m roll)



## White MD Corrugated Conduit

- UV resistant PVC-U, 5 year warranty
- Telecom; complies to AS/NZS2053

CCN120 (Ø20mm, 50m)  
 CCN121 (Ø25mm, 25m)  
 CCN122 (Ø32mm, 25m)  
 CCN123 (Ø40mm, 25m)  
 CCN124 (Ø50mm, 25m)



## Wide range of Electrical & Conduit Accessories

- UV resistant PVC-U, 5 year warranty

Junction boxes  
 Deep Junction boxes  
 Terminal Block Boxes

90° Sweep Bend  
 Inspection Elbows  
 Girder Clips Jars

Conduit Coupling  
 Locating Flanges  
 GPO C-Clips

Gal. Steel Half Saddles  
 Saddle Spacers  
 Screw Connector Jars

**Sign up for trade pricing**



# New electrical range by AVOL



## Single & Double Pole GPOs

- Polycarbonate, UV resistant, 250VAC, AS/NZS3133, 3112, 3110
- Available in Single Pole and Double Pole, 10A and 15A models

### Single GPO

ESW161 (DP, 15A, White)

### Twin GPO

ESW150 (SP, 10A, White)  
 ESW150B (SP, 10A, Black)  
 ESW162 (DP, 10A, White)  
 ESW162B (DP, 10A, Black)  
 ESW165 (DP, R15A, L10A, White)  
 ESW182 (DP, 15A, White)

### Twin GPO + Light Switch

ESW151 (SP, 10A, White)  
 ESW164 (DP, 10A, White)

### Quad GPO

ESW184 (DP, 10A, White)  
 ESW169B (DP, 10A, Black)

### Twin GPO with 2.4A USB Type A&C

ESW168 (DP, 10A, White)



## 10A Light Switches

- Polycarbonate, UV resistant, 250VAC, AS/NZS3133, 3112, 3110

### Horizontal Light Switches (White/Black)

ESW140 (Blank Plate, White)  
 ESW141 / ESW151B (1-Gang)  
 ESW142 / ESW152B (2-Gang)  
 ESW143 / ESW153B (3-Gang)  
 ESW144 / ESW154B (4-Gang)  
 ESW145 / ESW155B (5-Gang)  
 ESW146 / ESW156B (6-Gang)

### Vertical Light Switch (White)

ESW130 (DP, 15A, White) **.50**

### Architrave Light Switch (White)

ESW120 (1-Gang)  
 ESW121 (2-Gang)  
 ESW122 (3-Gang)  
 ESW123 (4-Gang)



## Outdoor GPOs, Isolator Switches and Single Surface Plug Bases

- Single pole, IP53 rated outdoor GPOs in 10A and 15A models
- Variety of conduit entries (side and front, Ø25mm conduit size)
- SAA approved and complies with AS/NZS3123
- Double pole 35A isolator switch 35A IP66 weather rated
- Surface plug & quick-fit connector models, 10A rated

### Outdoor GPOs

WGPO110 (Single, SP, 10A)  
 WGPO115 (Single, SP, 15A)  
 WGPO210 (Twin, SP, 10A)  
 WGPO215 (Twin, SP, 15A)  
 WGPO2X (Twin + Switch, SP, 10A)

### Isolator Switch

ISM100 (DP, 35A, IP66)

### Surface Plug & Quick Connector

ELA130 (Surface Plug, 10A)  
 ELA131 (Quick-Connect, 10A)



# AVOL complete electrical & comms conduit (AS/NZ2053)



## Wall Plates, Brush Plates and GPO Accessories



- Polycarbonate, UV resistant, wall plates suit Clipsal & AVOL mechs
- Nylon standard and bull nose brush plate (inlet size: 52x58mm)
- Insulation shroud, screw fit (polycarbonate, 98 x 55 x 51)
- Recessed mount box, screw fit (polycarbonate, 98 x 64 x 44mm)

### White Wall Plates

- ESW100 (Blank)
- ESW101 (1-Gang)
- ESW102 (2-Gang)
- ESW103 (3-Gang)
- ESW104 (4-Gang)
- ESW105 (5-Gang)
- ESW106 (6-Gang)

### Brush Plates

- ESW190 (Brush, White)
- ESW190B (Brush, Black)
- ESW191 (Bull Nose, White)
- ESW192 (Reverse Bull, White)

### GPO Accessories

- ELA125 (Insulation Shroud)
- ELA126 (Recessed Box)



## Switch Mechanisms

- Suits AVOL & Clipsal wall plates
- Data mechs incl. wiring clip

### Switch Mechs (250V AC)

- ELM140 (SP, 10A, White)
- ELM141 (SP, 16A, White)
- ELM150 (DP, 16A, White)
- ELM150B (DP, 16A, Black)
- ELM151 (DP, 35A, White)

### Data Mechs (incl. Wire Clip)

- ESW120 (CAT5e)
- ESW121 (CAT6)



### USB Mechs (5V)

- ELM160 (2.1A, 1 x Type A)
- ELM161 (2.1A, 2 x Type A)
- ELM162 (2.4A, Type A & C)

### AV Mechs

- ELM100 (Red, RCA)
- RCA also in White & Yellow
- ELM122 (HDMI-HDMI)

### ELM101 (F-F Type)

- ELM104 (F Type Right Angle)
- ELM102 (BNC to F-Type)
- ELM103 (BNC to Block)



## Electrical Switchboards with Enclosure

- 240~415V, up to 63A rated, UV/fire resistant HIPS/ABS housing, indoor or outdoor (IP66), SAA/IEC certification

FMS-8 (8-Pole, Flush)  
SMS-8 (8-Pole, Surface)

SMS-12  
(12-Pole, Surface)

SMS-18  
(18-Pole, Surface)

SMS-12W (IP66,  
(12-Way, Surface)

**Sign up for trade pricing**

# We have the power supplies to suit your alarm or CCTV job



\*Battery sold separately

## SECURVIEW

### Heavy Duty CCTV PSUs

- 18 individually fused outputs; compact metal case
- Thermal cutoff, short circuit, high voltage & over current

PS12VDC10A18CHB (12VDC 10A output)

PS24VAC10A18CH (24VAC 10A output)



### DIN Rail Adjustable Voltage PSUs

- 12VDC 7.5A and 24VDC 4A models; 88~264VAC input
- Current limiting on overload, auto-shutdown on over voltage/temperature; free air convection cooling

PSDR12V7A2 (12VDC 7.5A)

PSDR24V4A2 (24VDC 4.0A)

**Sign up for trade pricing**

## Rhino

### 4 Port 12VDC PSU

- Isolated power outputs
- 4 x 12VDC at 0.7A outputs
- 100~240VAC input voltage
- 4 x DC plug terminated



PS12VDC700-4

## SECURVIEW

### 4 Channel 12V PSU

- 4CH 12VDC 5A supply
- Adjustable output 12~13.8V
- 100~240VAC input voltage
- High voltage & overcurrent protection



PS12V5A4CH

## Rhino

### 12VDC PSUs

- 2A and 5A models

PS2000SM (2A)

PS5000SM (5A)



## Watchguard

### 12VDC Lead Acid Batteries

- Available in 7A and 1.2A
- Sealed lead acid batteries

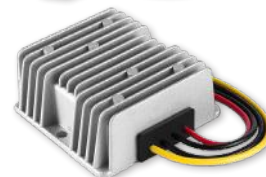
D12V7A

D12V1.2

## SECURVIEW

### DC Power Converters

- Convert DC 12V~24V or 24V~12V
- Wide input and stable output voltage
- 18~35V to 12V; 11~16V to 24V
- Overcurrent & overvoltage protection
- IP68, anti-vibration, dustproof



VSPOWCONVERTER1 (12 to 24V)

VSPOWCONVERTER2 (24 to 12V)

## SECURVIEW

### Leads & Connectors

- BNC, Power and RJ45 plugs and cable connectors
- Contact us for our full range and bulk pricing



- DC4CHLOOM (4-way DC splitter)
- DC5CHLOOM (5-way DC splitter)
- DC8CHLOOM (8-way DC splitter)
- VSDCPFTB/MTB (DC to Term. block)
- VSFBNCTWIST (BNC twist connect)
- VSFBNC59 (RG59 BNC connector)





# Superb WiFi air conditioning with 6 year warranty

World's largest residential AC manufacturer



## Inverter WiFi R32 Air Conditioner Systems

- Manufacturer 6-year parts and labour warranty
- Full inverter air con systems with indoor & outdoor unit
- Ideal for homes, offices and small businesses
- Up to 7.1kW cooling & heating; air flow up to 375L/sec
- Control via WiFi for iOS/Android (local IR remote incl.)

AC4201-(I/O) (2.7kW, 153L/s)    AC4204-(I/O) (5.2kW, 236L/s)    AC4207-(I/O) (7.1kW, 375L/s)

[Sign up for trade pricing](#)



## Pre-insulated Pair Coil

- Available in 3 gauges
- Pre-insulated pair coil
- 410A rated; 20m rolls



ACA-PC01 (1/4 ~ 3/8", 6.35 ~ 9.53mm)  
 ACA-PC02 (1/4 ~ 1/2", 6.35 ~ 12.70mm)  
 ACA-PC03 (1/4 ~ 5/8", 6.35 ~ 15.88mm)



## AC Unit Wall Mounts

- Adjustable feet and position
- **-WB01:** 450 x 350 x 700mm
- **-WB02:** 550 x 450 x 850mm
- **-WB03:** 550 x 375 x 780mm



ACA-WB01 (120kg rated)  
 ACA-WB02 (150kg rated)  
 ACA-WB03 (200kg rated)

[Sign up for trade pricing](#)



## 100mm Air Conditioning Ducting

- 100mm split ducting, 2m lengths (103x68mm)
- Flame retardant PVC, durable finish UV rated



DUCAC100DT (2m length duct)  
 100CC (Ceiling cap)  
 100CJ (Cover joint)  
 100FE (Flat elbow)  
 100FJ (Flex joint)  
 100TJ (Tee joint)  
 100VE (Vertical elbow)  
 100WC (Wall corner)

# Connect with Active Online for more

Our customer support is personal



Active Online



## Our Mission

Provide self-motivated consumers and trade customers with professional-level technical equipment, as well as the advice, information, and support they need to integrate their projects effortlessly.



## Online Tools & Tech Support

We offer technical consultancy and advice as a service. Initial discussions are always free. Contact us to discuss your requirements.



## Exclusive Member Deals

Register and become a member and benefit from member discounts on almost all products we sell.

## ***We Price Match!***

If you have a valid offer of new stock from an Australian supplier call us and ask about price matching.

We also offer free shipping within Australia for orders over \$600.

For online sales & quick fulfilment, purchase online at  
***[www.activeonline.com.au](http://www.activeonline.com.au) Or Call 1300 816 742***